



NDI670

SKID STEER LOADER



NDI 670

skid steer loader

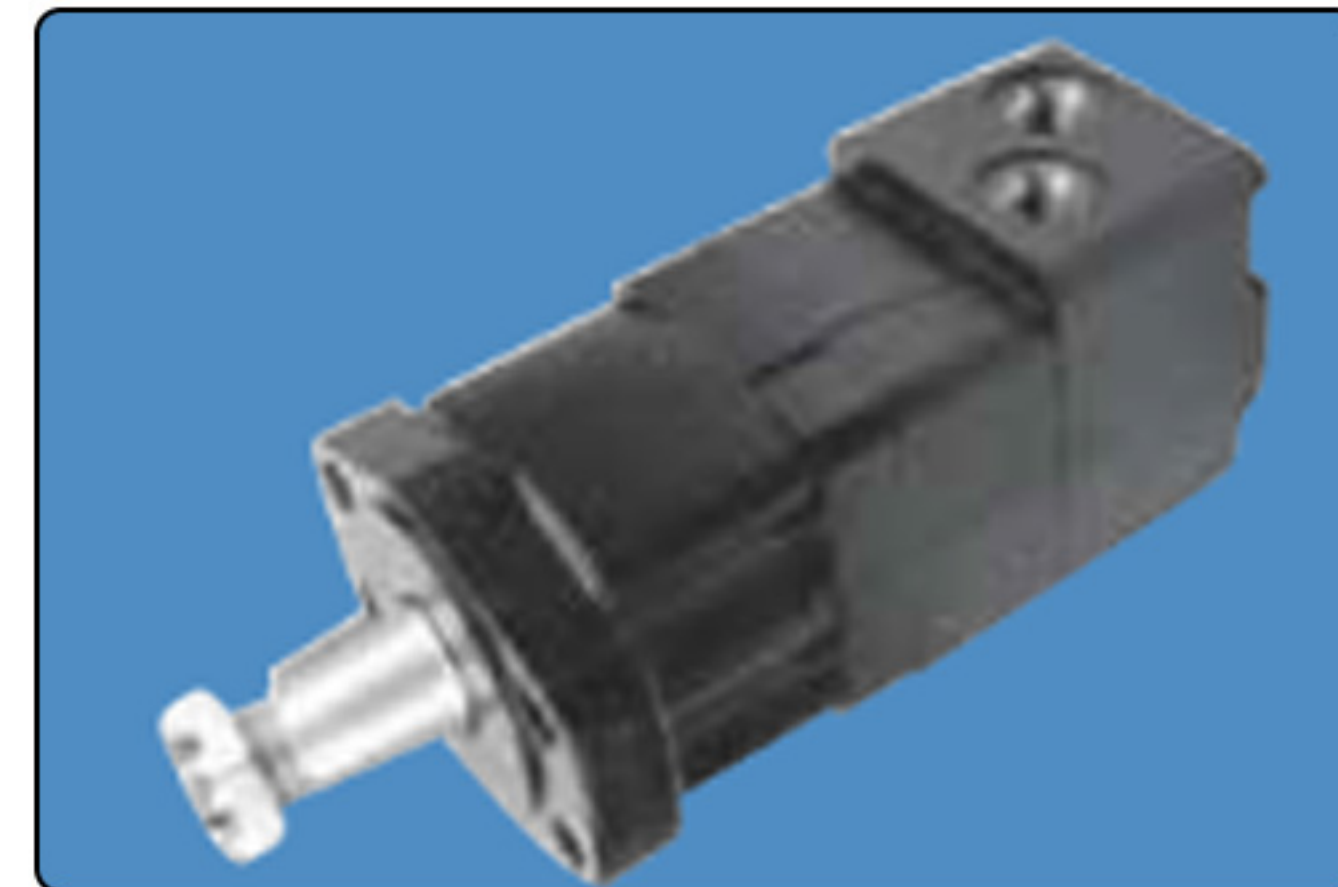
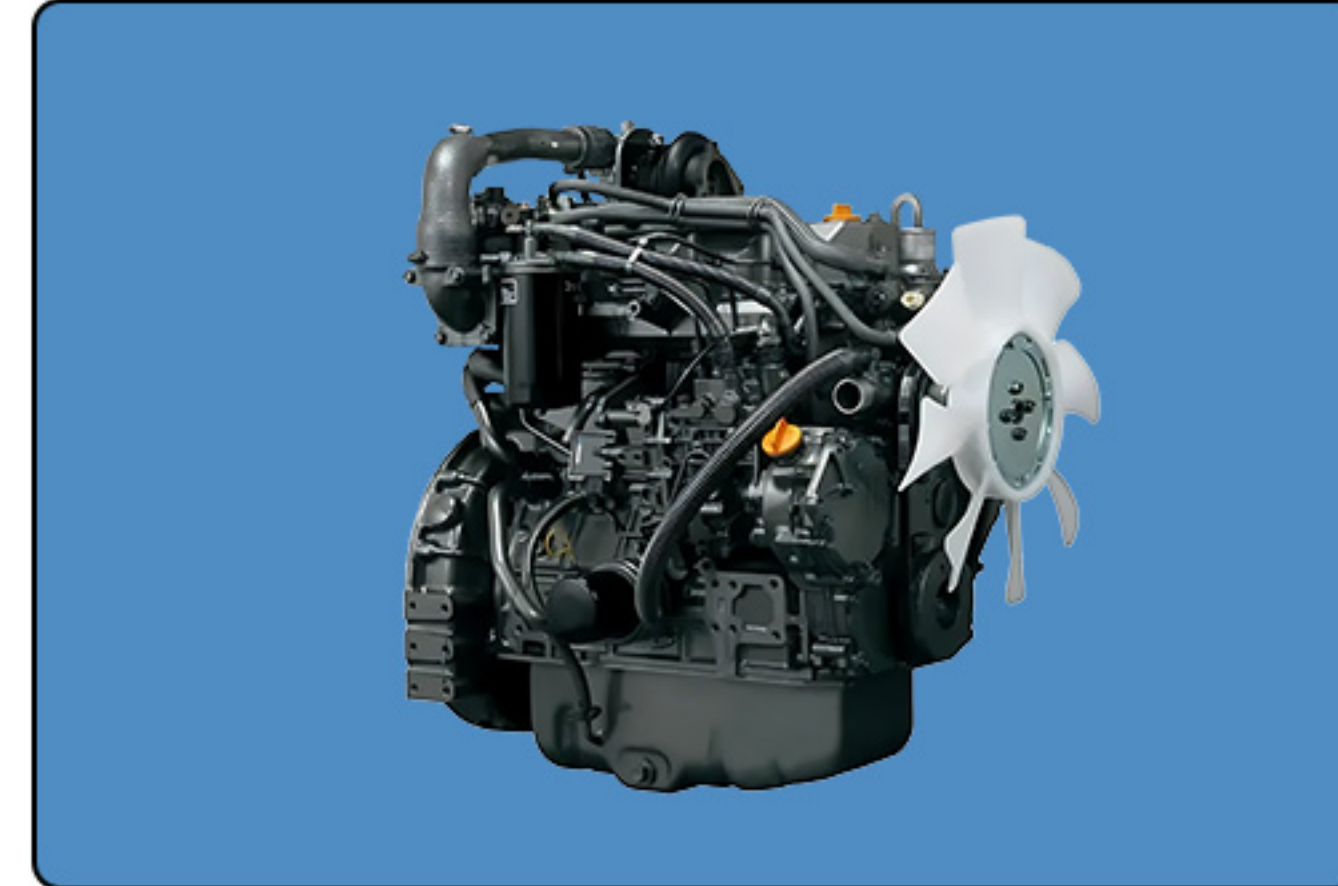
NDI670 is a brand new heavy-duty skid steer loader launched by RIPPA. The whole machine adopts a high-power engine, which increases the flow rate of the whole machine and meets the requirements of more machines. The wheelbase of the whole machine is increased to ensure the stability and safety under high load. It is mainly used in the domestic snow removal market and municipal maintenance and other heavy-duty operating conditions.



NDI 670 Details and benefits

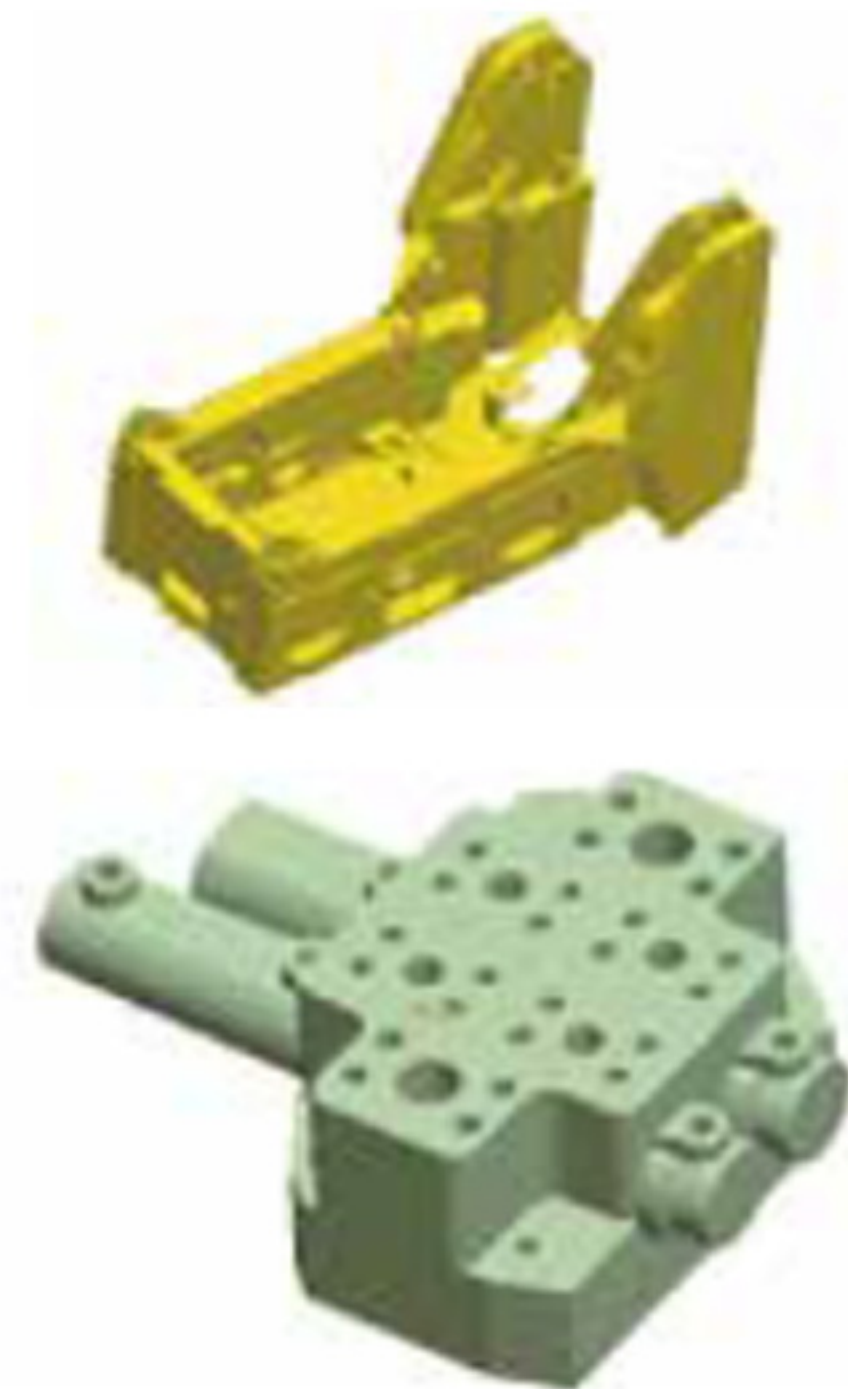
Strong power, energy saving and high efficiency

- The renowned brand engine equipped features strong power, ultra-low emission, and higher fuel efficiency.
- The double-speed motor with maximum speed up to 9km/h is installed to achieve high working efficiency.
- It can respond faster to the needs of emergency working conditions such as rapid snow removing.
- The hydrostatic drive device is applied to realize quick change of appropriate attachments in the operation site.



Plateorm design for high reliability and firmness

- The serialization design is applied for the frame based on the skid-steer tonnage to realize high structural reliability. All critical structural parts are optimized by finite element analysis to realize reasonable stress distribution.
- The imported high-quality hydraulic parts are applied to realize higher reliability.



Comfortable operating environment

- RIPPA skid steer loader introduces the concept of "functional area" and is designed based on user operating comfort. Luxurious adjustable seats with shock absorption and seat belts, and ergonomically controlled electronic control handles give drivers a different driving experience. The rocker switch of the whole machine is integrated on the left column of the cab. Some commonly used horn and accessory control switches (such as planer cylinder control switches) are integrated on the left and right joysticks (optional).



- The layout of joysticks and the instrument panel is optimized in accordance with ergonomic principles so that all drivers of different body sizes can always maintain the best comfort to make operations easier.
- Centralized switch design greatly improves equipment operation convenience and driver work efficiency.
- The cab is spacious and the seats are adjustable. The cab height is 1900mm, which greatly improves comfort.
- The hydraulic oil cylinder with strengthened design and integrated design can reduce welding seams and prevent the oil cylinder from breaking easily.



More safety designs

- The cab is equipped with seat belts and bumpers to ensure operator safety.
- The new structure design of the chassis reduces the stress concentration points and improves the durability and stability of the equipment.
- The design of the big arm link is strengthened, the plate is thickened, the manufacturing process is improved, and the welded type is changed to the one-piece casting type.



Maintenance, easy and convenient



[ENGINE]

NDI670 skid steer loader equipped with Yanmar engine. Powerful performance in a compact design, the excellent performance brought by the extra torque greatly contributes to the improvement of processing performance. At the same time, low fuel consumption, low vibration, low noise, and consideration for the environment have reached a high level.

[REPAIR PARTS]

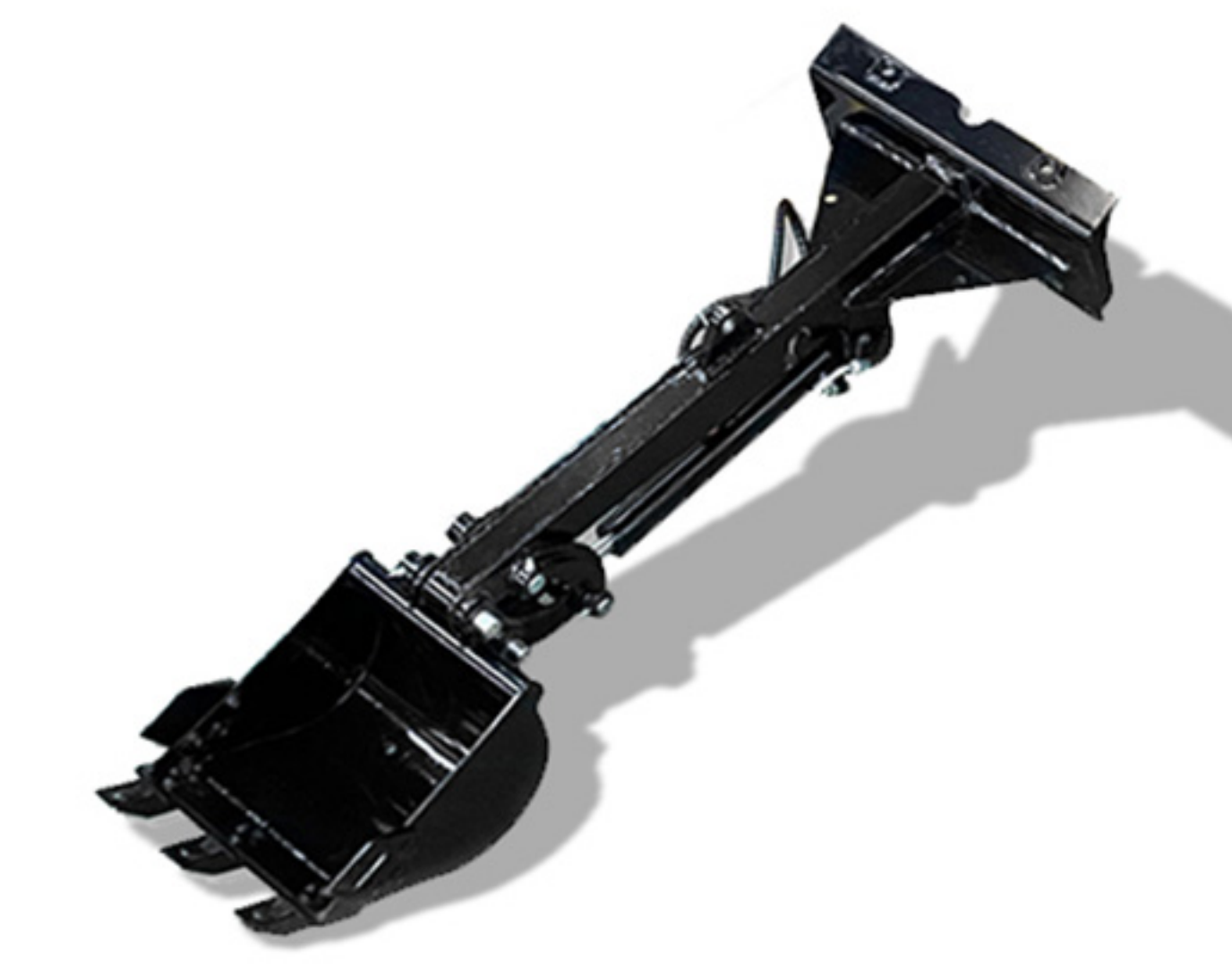
- All maintenance parts are in the back, and the rear guard can be opened for maintenance and easy replacement.
- The maintenance points are concentrated on the rear of the machine to realize the one-stop repairs/maintenances without uplifing the cab
- The cab can be tilted backward for a large angle to make the repair and maintenance portions more accessible.
- The back cover are easy to open, and all components and pipelines are within easy reach, saving time and effort for maintenance.



One machine with multiple functions

Multi-machine application

- Through market research and test research, the applicability of RIPPA slip loader in the working environment of the whole machine and the machine has done a lot of research. The floating position function is added, so that the boom can float up and down following the uneven ground to meet the needs of more working conditions; Increase the overload oil supplement valve, eliminate the impact of the cylinder to the limit, but also prevent the cylinder suction, improve the service life of the whole machine.
- The international interchangeable quick change coupling enables the rapid and convenient change among tens of attachments, including angle sweeper, now blower, planer, and breaking hammer.



Digger



Auger



Pallet Fork



Rock Bucket



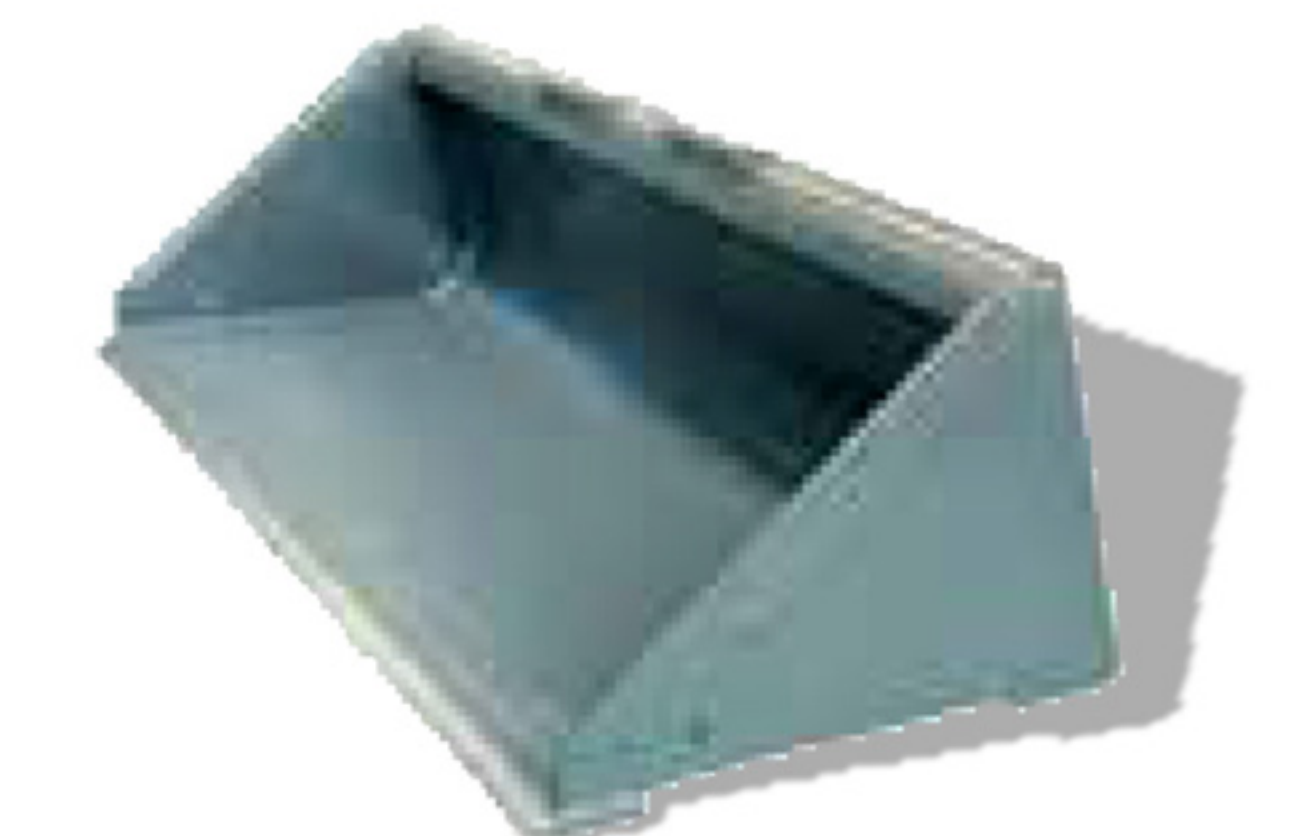
Hydraulic breaker



Rotary drill



Angle Broom



Standard Bucket



4in 1 Bucket



Pile Driver



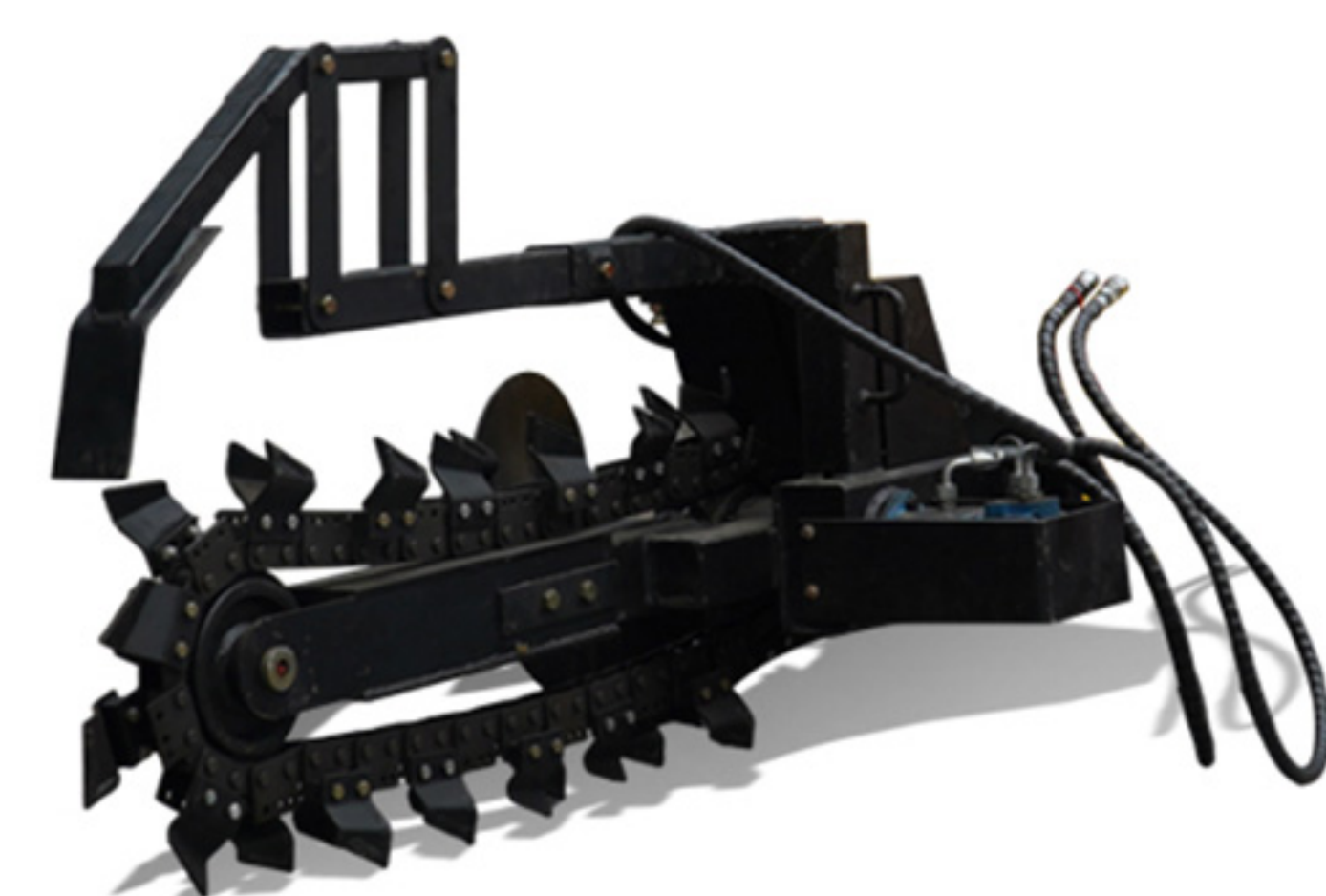
Fork Clamp



Ditch Compactor

Install different assistive devices

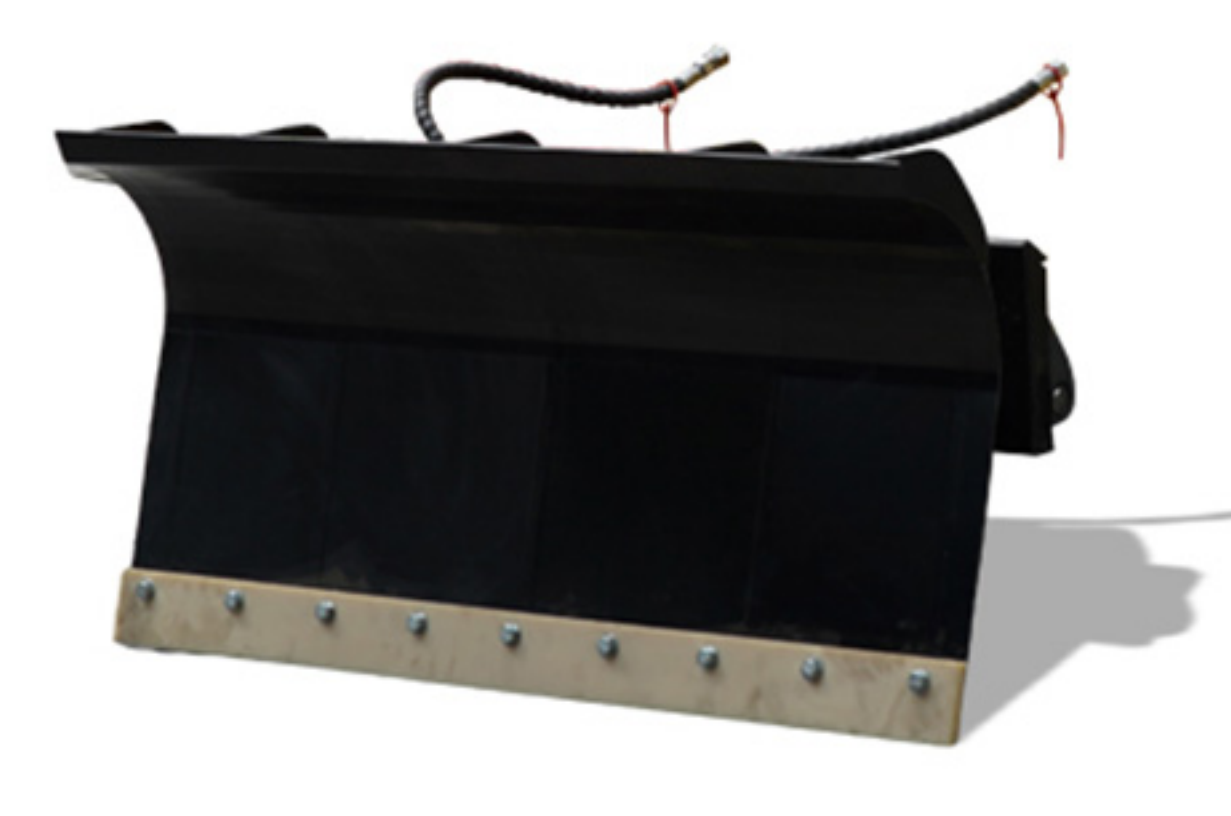
When replacing auxiliary equipment such as hydraulic quick changers, breakers, and wood grabbers, you can easily replace them by pressing the button, which is convenient and quick.



Trencher



Trencher



Snow Blade



Grapple

[TIRE] (TRACKS OPTIONAL)

The use of thickened and wear-resistant rubber tires makes the machine more stable, smooth and safe when walking.



[LED LIGHT]

The whole vehicle is equipped with LED headlights, LED rear tail lights and alarm lights with four flash function.



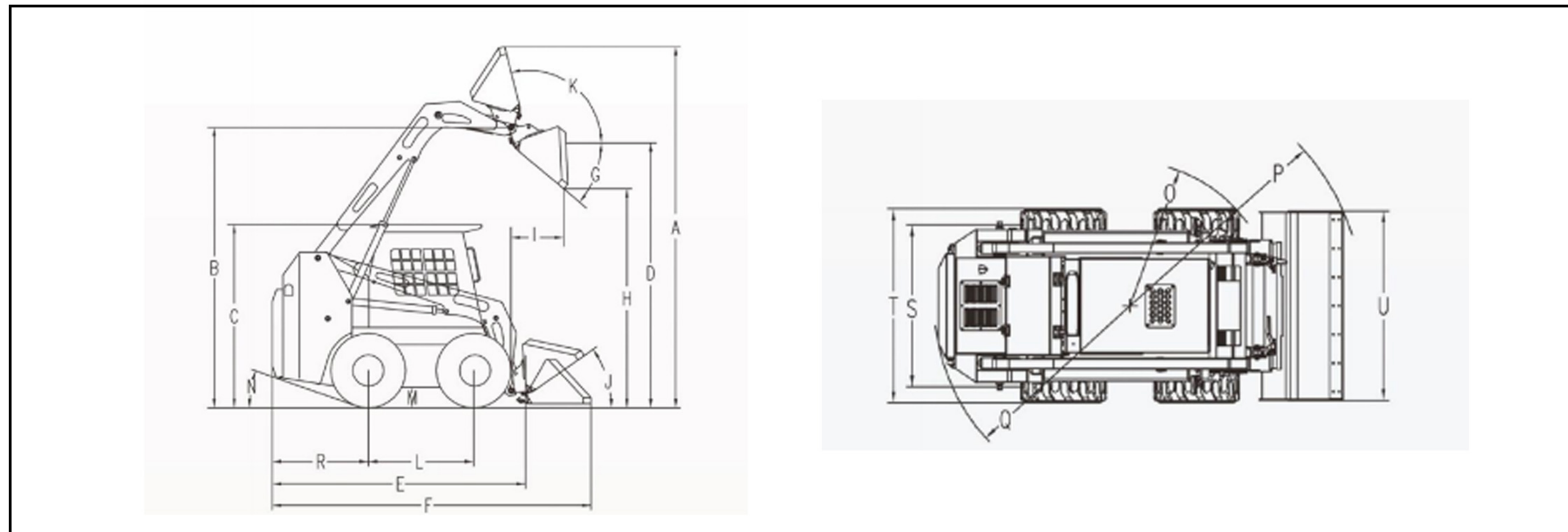
[BUCKET]

Large-capacity bucket, high working efficiency, can shovel up to 380 kg of cargo.



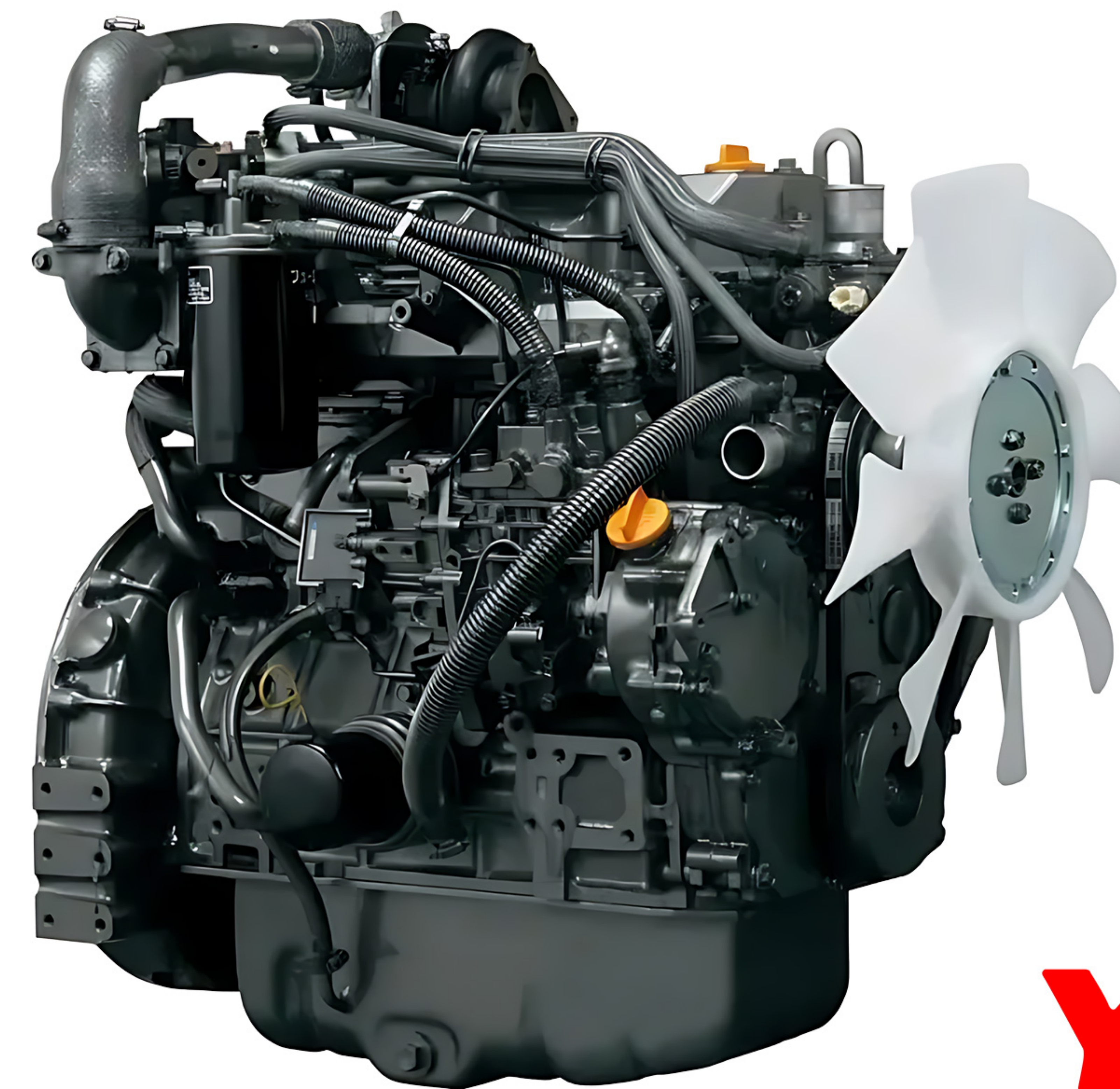
More performance parameters

I Envelope diagram

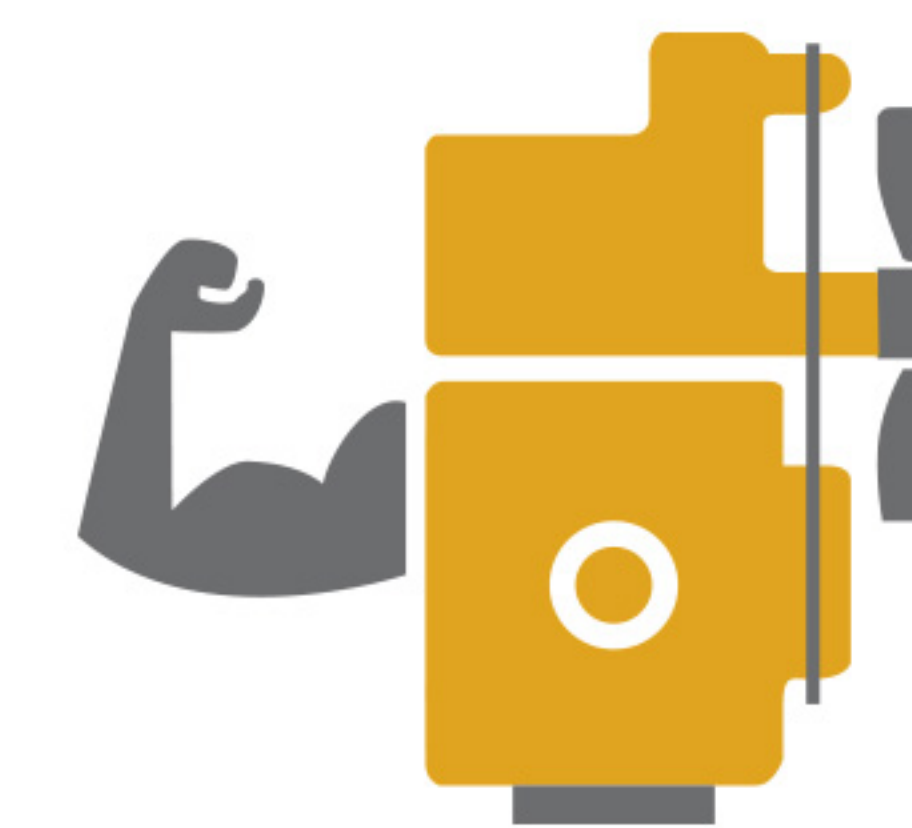


I Product parameters

The main technical parameters		Model	NDI670
A	Overall operating height (mm)		3552
B	Height to bucket hinge pin (mm)		2642
C	height to top of cab (mm)		1900
D	Height to bottom of level bucket(mm)		2446
E	Without bucket length (mm)		2267
F	overall length with bucket(mm)		2959
G	Dumping angle at maximum height(°)		40
H	Dumping height(mm)		1933
I	Dumping reach(mm)		441
J	Rollback o bucket on ground(°)		30
K	Rollback of bucket at full height(°)		103
L	Wheelbase(mm)		801
M	Ground clearance(mm)		145
N	Angle of departure(°)		20
O	Front turning radius without bucket(mm)		960
P	Front tuning radius(mm)		1660
Q	Rear tuning radius(mm)		1253
R	Rear axle to bumper (mm)		910
S	Tread width (mm)		785
T	Width (mm)		927
U	Bucket width (mm)		950



POWERED BY
YANMAR



High Performance Engine

High performance engines provide a powerful boost for tough works.



Clean and Low-Noise

Ultra-low noise design, friendly to people and the environment.

Model	NDI670
Operating load (kg)	380
Max Speed (km/h)	9
Rated flux (L/min)	37
Tire (track) model	5.7-12
Rated power (Kw)	18.7 (Yanmar engine)
Fuel tank capacity (L)	28
self weight bucket (kg)	1300
Bucket capacity (m ³)	0.19

WE ARE RIPPA

Shandong Rippa Machinery Group Co., Ltd. is located in the Sixth Industrial Park, Jining high tech Zone, Shandong Province. It is a state-level high-tech enterprise with the right to import and export;

The company's staff are vigorous and enterprising, and constantly create the legend and glory of the school!



Shandong Rippa Machinery Group Co., Ltd.

Add: No.6 Industrial Park, Chongwen Avenue 2166, Gaoxin District, Jining City, Shandong Province



<https://www.rippaexcavator.com>

Some specifications are based on engineering measurements and may deviate from actual conditions. Specifications are for comparison purposes only and are subject to change without notice. Specifications of individual RIPPA equipment will vary based on normal variations in design, manufacturing, operating conditions and other factors. Some pictures of RIPPA equipment are not limited to standard packages.