



# RS03

## SKID STEER LOADER



**EXCELLENT PERFORMANCE  
FULLY MEET THE NEEDS OF  
VARIOUS USERS.**



# RS03 SKID STEER LOADER

Various accessories such as hammers, rippers, timber grabs, and rakes can be added to meet more job requirements.

Quick change can be convenient and quick to replace the auxiliary equipment.

Safe operation, can realize 360° omni-directional operation

Detachable inspection panel is convenient for inspection and inspection of sprockets and travel motors can be more rigorous.

The Rato environmentally friendly engine meets the Euro V and EPA cylinder displacement standards.

Both the wheel type and the crawler type adopt chain transmission (four driving forces), so that the transmission efficiency is higher

There are anti-skid stickers on the pedals to prevent slipping when operating the machine.



# EXCELLENT BASIC PERFORMANCE



## ENGINE

The design has a compact structure and powerful performance. The engine adopts Rato R420, which has low fuel consumption, small vibration and low noise, and has reached a high level of environmental consideration.



PETROL ENGINE — RATO R420

**8.6** kw/3600rpm

## [ SPEED MODE ADJUSTMENT ] (standard configuration)

When working, just push the pull rod, the engine speed will automatically adjust the speed, and adjust the speed gear according to the working mode to make the work more humanized



## [ SUPPORT ROLLER ]

Both wheeled and crawler types use chain drive (four driving force), so the transmission efficiency is higher, and they can work normally in harsh environments. The left and right walking is an independent hydraulic system, and the power is more sufficient.

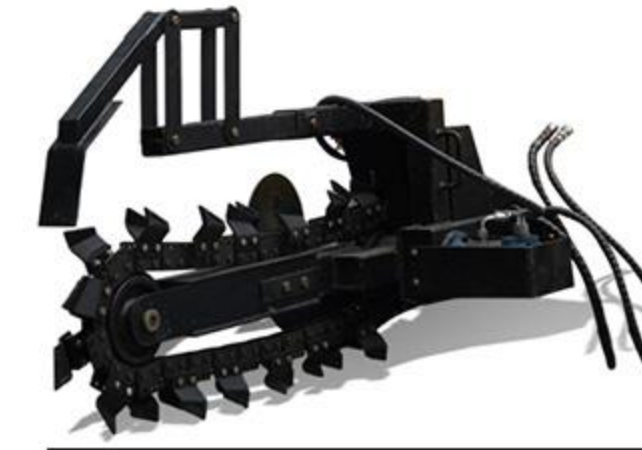


# REPLACE ASSISTIVE DEVICEMODE (standard configuration)

When replacing auxiliary equipment such as hydraulic quick changers, breakers, and wood grabbers, you can easily replace them by pressing the button, which is convenient and quick.



## MORE ACCESSORIES



**Trencher**



**Trencher**



**Snow Blade**



**Grapple**



**Digger**



**Auger**



**Pallet Fork**



**Rock Bucket**



**Hydraulic breaker**



**Rotary drill**



**Angle Broom**



**Standard Bucket**



**4in 1 Bucket**



**Pile Driver**

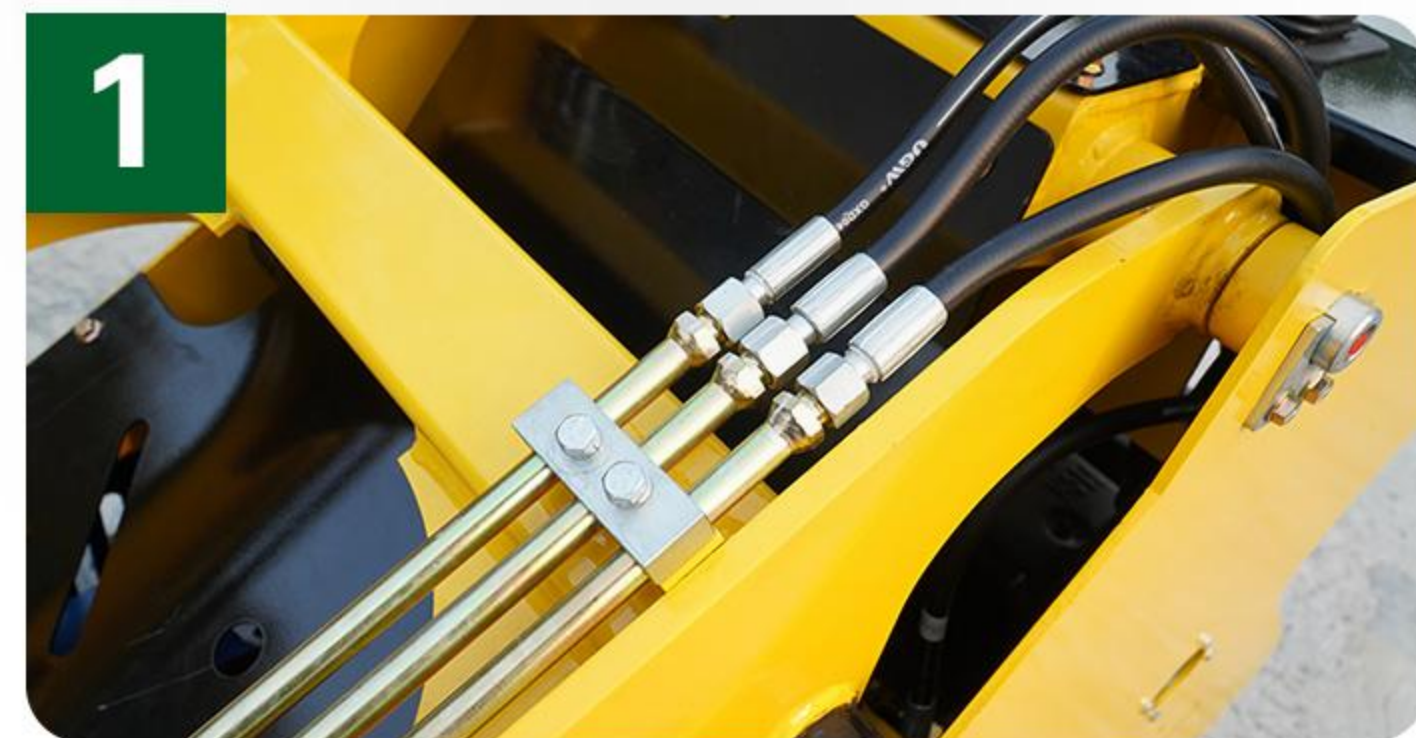


**Fork Clamp**



**Ditch Compactor**

# SHOW MORE DETAILS



## Oil pipeline

A metal oil pipe is used above the robotic arm, which is not easily damaged during work.



## Operating handle

A single lever realizes forward, backward, steering and other actions, which is convenient for operation and has high and low speed functions.



## Oil cylinder

Inverting the cylinder can effectively protect the cylinder rod from damage and extend the service life of the cylinder.



## Bucket

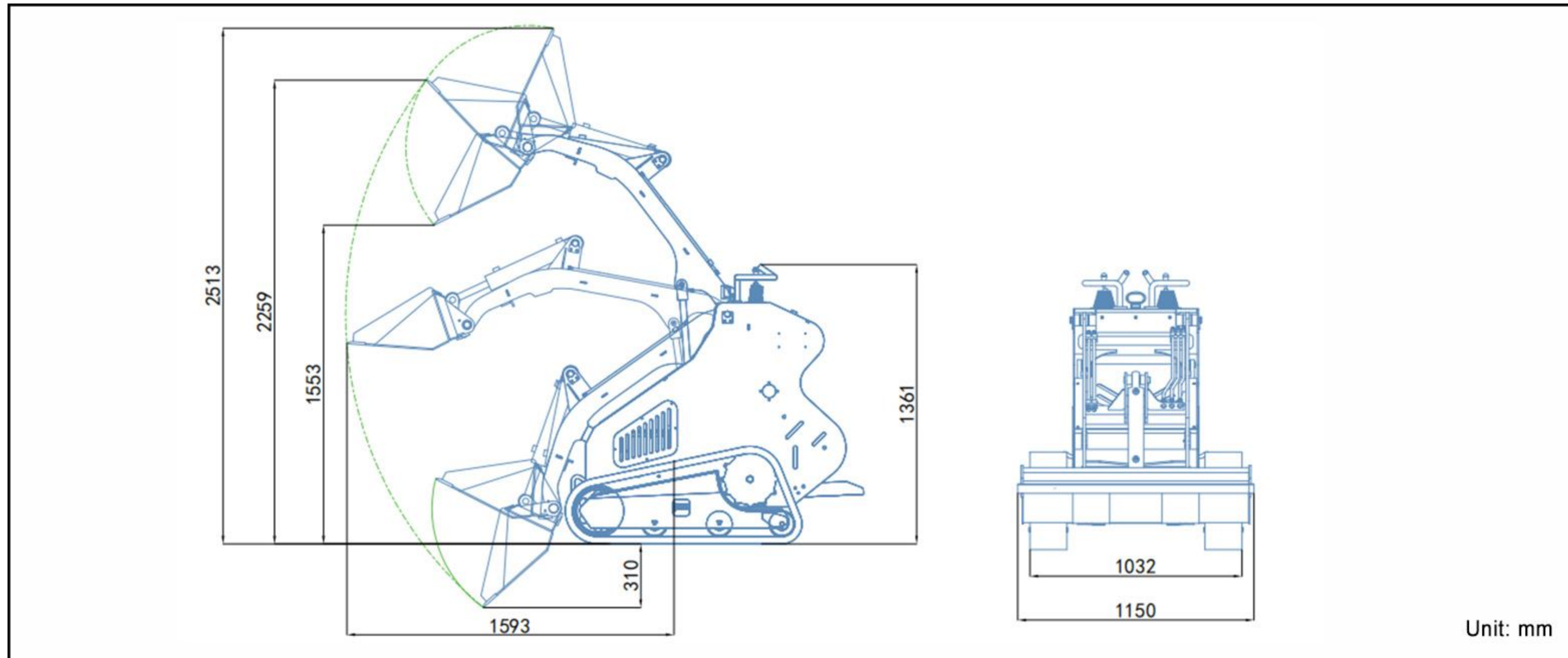
It can be quickly disassembled and various accessories such as ripper, wood grabber, and rake can be added to meet more working requirements.

# SCENARIO APPLICATION



# DETAILED PARAMETER CONFIGURATION

## Envelope diagram



## Product parameter

### Basic performance parameter

Machine working weight	725kg	1595lb
Bucket capacity	0.15m <sup>3</sup>	5.3ft <sup>3</sup>
Rated load mass (safe load)	140kg	308lb
Maximum load mass	280kg	616lb
Travel speed low/high speed	0-2.5Km/h	0-1.55mph
Gradeability	25%	25%
Ground pressure	22.5Kpa	5058psi
Maximum unloading height	1553mm	61.1in
Maximum loading height	2259mm	88.9in
Maximum unloading distance	620mm	24.4in
Minimum ground clearance	129mm	5.1in

### Body

Transport length - with bucket (mm)	2100mm	82.7in
Transport length - without bucket (mm)	1638mm	54.5in
Transport width (mm)	1150mm	45.3in
Transport height (mm)	1361mm	53.6in
Bucket width (mm)	1150mm	45.3in

## POWERED BY Rato R420



### Engine

Engine brand	Rato	Rato
Engine model	R420	R420
Maximum horsepower	11.7ps	11.5hp
Maximum power	8.6kw	8.6kw
Maximum speed	3600rpm	3600rpm
Displacement	0.42L	0.11gal
Number of cylinders	1	1
Cooling method	Air-cooled	Air-cooled
Engine oil change amount	1.1L	0.291gal
Fuel form	Gasoline	Gasoline
Fuel grade	92#	92#
Theoretical fuel consumption	0.8-1.2L/h	0.211-0.317gal

### Hydraulic system

Main pump type/model	Gear pump PGP51044SLP
Main pump brand	Tianjin Walking
Multi-way valve brand	Tengfei
Travel hydraulic motor type	Luko BM5-250
Travel motor brand	Luko

# WE ARE RIPPA

Shandong Rippa Machinery Group Co., Ltd. is located in the sixth industrial park of Jining High-tech Zone, Shandong Province. It is a state-owned high-tech enterprise with import and export rights.

The company's employees are energetic and enterprising, constantly creating the legend and fame of the rippa!



**Shandong Rippa Machinery Group Co., Ltd.**

Address: No. 6 Industrial Park, 2166 Chongwen Avenue, Gaoxin District, Jining City, Shandong Province

Some specifications are based on engineering measurements and may differ from actual conditions. Specifications are for comparison purposes only and are subject to change without notice. Specifications of individual RIPPA devices may vary due to normal variations in design, manufacturing, operating conditions and other factors. Some images of RIPPA devices are not limited to standard packages.



[www.rippa.com](http://www.rippa.com)