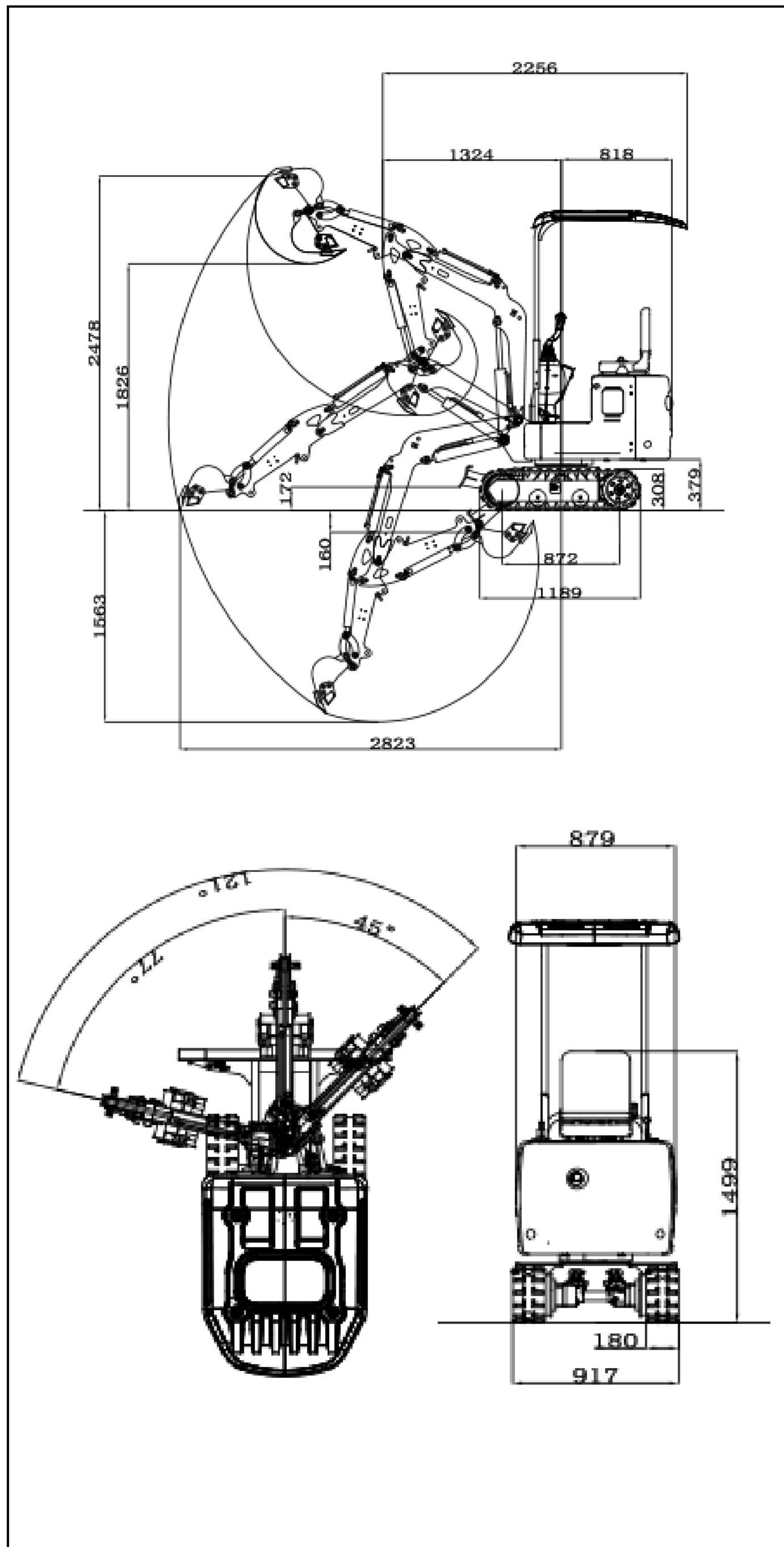


■ Envelope diagram



■ Parameters Table

BASIC PARAMETERS	Machine working weight (kg)	910
	Bucket capacity (m <sup>3</sup> )	0.014
	Travel speed low/high speed (Km/h)	0-1.8
	Gradeability (%)	30%
	Ground pressure (Kpa)	25.53
	Maximum digging force (kN)	9.2
	Maximum digging radius (mm)	2823
	Maximum digging depth (mm)	1563
	Maximum digging height (mm)	2478
	Maximum unloading height (mm)	1826
ENGINE	Engine brand	kubota
	Engine model	D722
	Maximum horsepower (ps)	13.97
	Maximum power (Kw)	10.2
	Maximum speed (rpm)	2500
	Displacement (L)	0.719
	Number of cylinders	3
	Cooling method	Water Cooling
	Engine oil change amount (L)	3.5
	Fuel form	Diesel
BODY	Fuel grade	0/-10
	Theoretical fuel consumption (L/h)	1.1-1.5
	Transport length (mm)	2256
	Transport width (mm)	917
	Transport height (mm)	2215
	Bucket width (mm)	300
	Boom length (mm)	1477
	Arm length (mm)	800
	Bulldozer blade width (mm)	885



# MINI EXCAVATOR R319



- Please read the instruction manual carefully and use it correctly.
- Be sure to fasten your seat belt during operation. Except for soft top specification
- When driving construction machinery with a body weight of less than 3t, please receive "special education on driving construction machinery for vehicles in advance, and be sure to participate in "skills training for driving construction machinery for vehicles" if it is more than 3t R319 According to the conditions of the Occupational Safety and Health Act, the body mass may reach 910kg
- In order to prevent breakdowns and accidents, be sure to check the machine regularly.



**EXCELLENT PERFORMANCE,  
FULLY MEET THE NEEDS  
OF VARIOUS USERS.**





Built-in oil pipe

Grease fittings  
on all connections

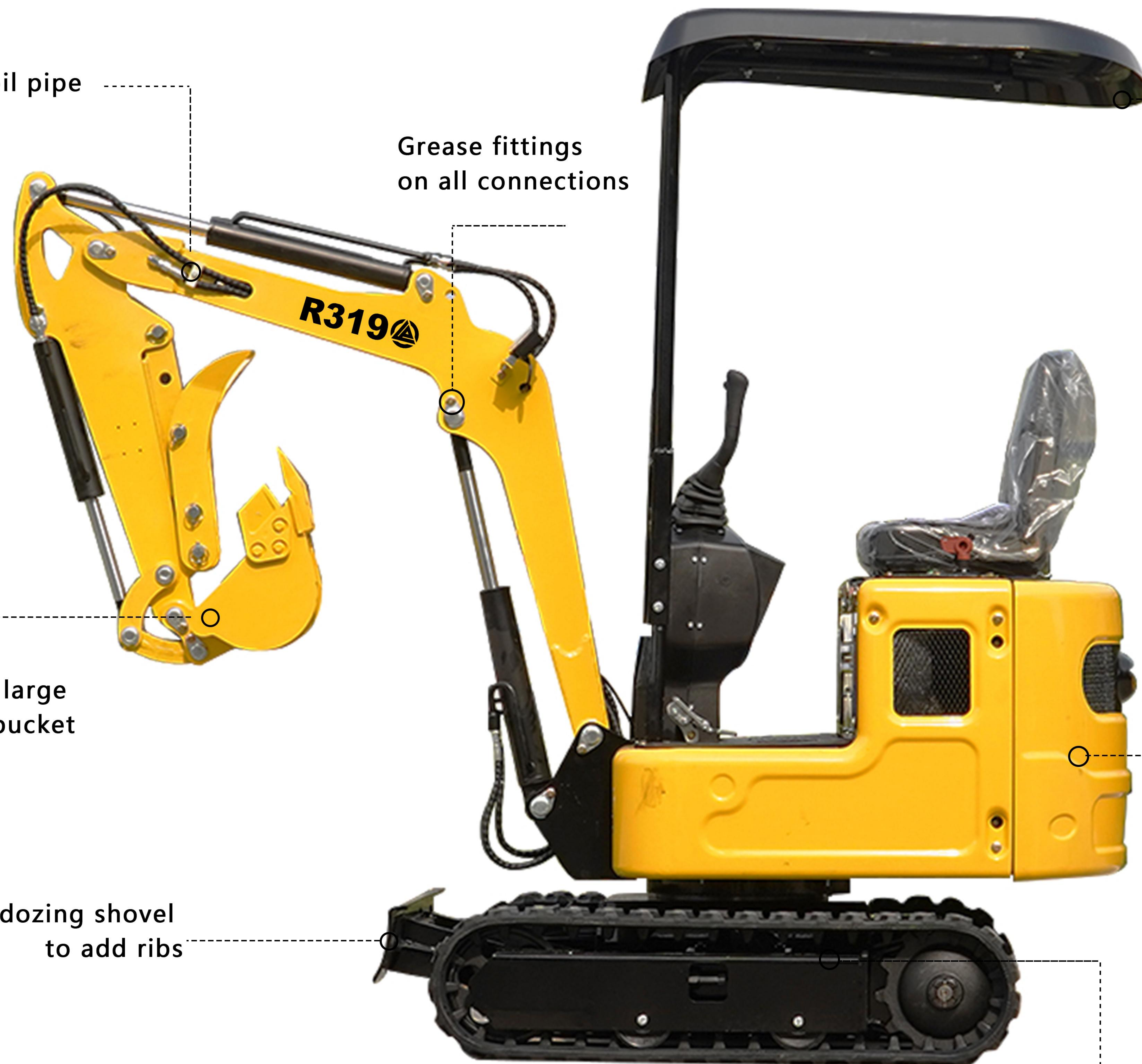
removable  
roof

Super large  
capacity bucket

One-piece  
stamping shield

Bulldozing shovel  
to add ribs

The slewing support  
mounting plate is  
integrated with the bridging



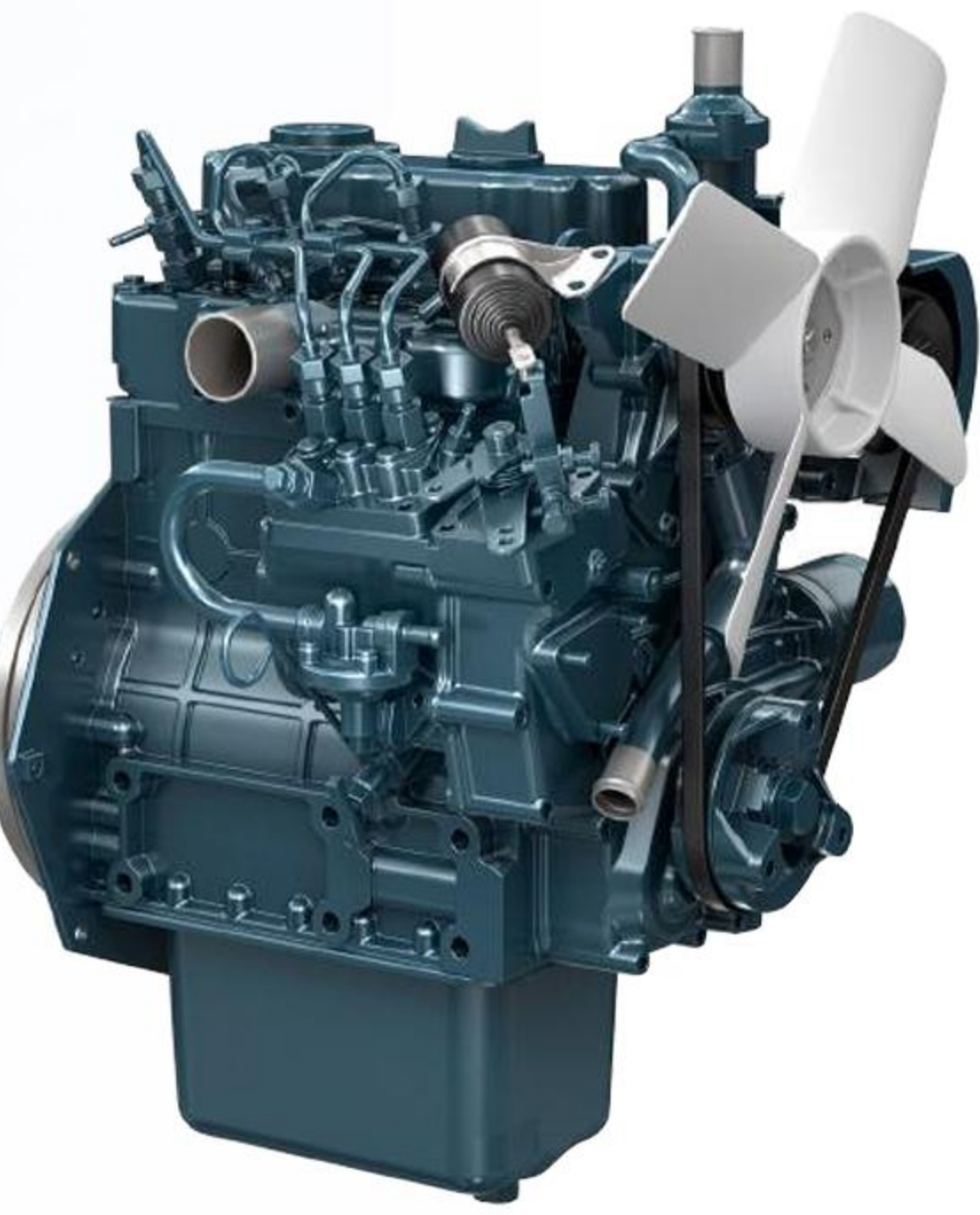


# EXCELLENT PERFORMANCE



[WATER-COOLED KUBOTA D722 ENGINE]

While achieving energy conservation and environmental protection Ensure high power output of the engine. Comply with EPA4 and Euro 5 emission standards. Low noise, low emissions, no impact on people and the environment.



DIESEL ENGINE

**10.2**kw/2500RPM

[THROTTLE REGULATOR]  
(STANDARD CONFIGURATION)

When working, the accelerator can be adjusted according to the intensity of the work, making the work more humanized.



[BULLDOZER]

The bulldozing shovel increases the rib plate, the strength is stronger, the service life is increased, and there is butter at the connection Empty, more convenient to lubricate





# RELIABLE JOB PERFORMANCE

## [Rear super small turn]

Minimize the part of the turning beyond the outside of the track as much as possible, so the machine can turn safely and securely. Ease of operation is ensured even in narrow working environments.

digging depth **1563 mm**

Maximum Ground Digging Radius **2823 mm**



1104mm



## [LED lights]

Make night work safer



## [Reinforced Chassis]

The slewing support mounting plate is integrated with the bridge frame to increase the use strength and simplify the welding process.



## [Metal Guard]

The machine cover is made of steel plate, which is not easy to be damaged. Even if damaged, it is easy to repair.

## [Integral stamping shield]



## [Standard assembly of dozer blade]

Suitable for various working environments.

## [Rear view is wide]

Reduce dead angles, prevent accidents during slewing, and ensure the personal safety of surrounding workers.

## [Driver seat]

The seat is designed according to ergonomics, and the back of the seat fits the curve of the back of the human body, which can meet the needs of users of different sizes. To a certain extent, it can reduce people's energy consumption, and can provide a comfortable backrest when people are working, so that people can always maintain a good working condition, thereby improving people's work efficiency.







# EXCELLENT OPERABILITY AND COMFORT

## **[Convenient and simple operation panel]**

Easy to use, easy to use after learning Flexible and convenient for all kinds of engineers



## **[Built-in tubing]**

Optimize the boom structure and simplify the welding process. The oil pipe is inside the boom to reduce the damage of the oil pipe.



## **[Bulldozer]**

The bulldozer cylinder is an integral cylinder with high strength and reliable operation.



## **[Adjustable Suspension]**

The best operating position can be set according to the driver's body shape and preference, making driving more comfortable.

