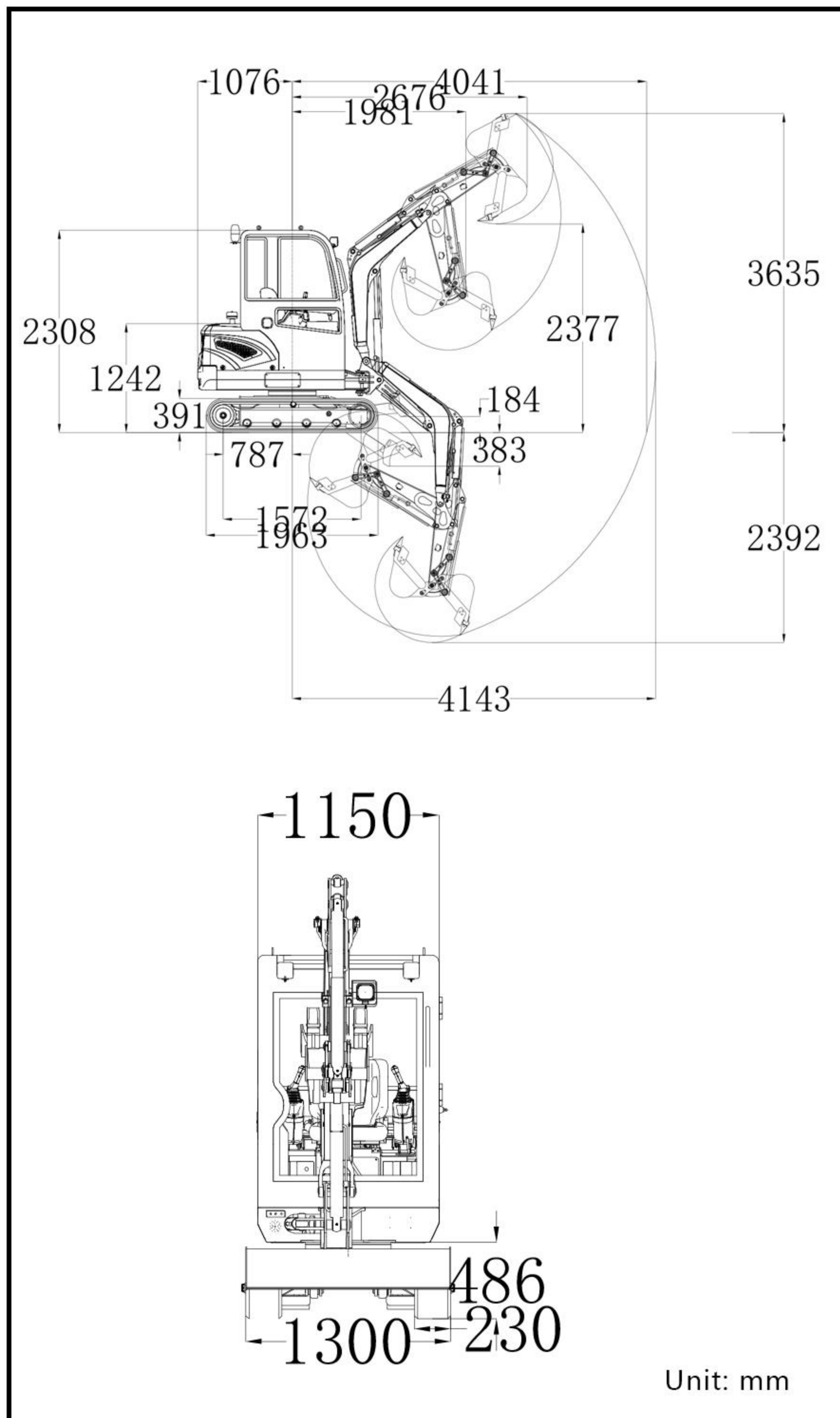


■ Schematic diagram of work area



■ Specification

Basic performance parameters	Machine working weight (kg)	1952
	Bucket capacity (m <sup>3</sup> )	0.036
	Walking speed low/high speed (Km/h)	0-1.8/0-2.8
	Gradeability(%)	30
	Ground specific pressure (Kpa)	31.43
	Maximum digging force (kN)	15.6
	Maximum digging radius (mm)	4143
	Maximum digging depth (mm)	2392
	Maximum digging height (mm)	3635
	Maximum unloading height (mm)	2377
	Maximum deflection angle (°)	111
	Track telescopic range (mm)	
Body	Transport length (mm)	3057
	Transport width (mm)	1300
	Transport height (mm)	2038
	Counterweight ground clearance (mm)	487
	Bucket width (mm)	400
	Boom length (mm)	1870
	Dipper length (mm)	925
Engine	Bulldozing board width (mm)	1100
	Engine brand	Kubota
	engine model	D1105
	Maximum horsepower (ps)	24.75
	Maximum power(Kw)	18.2
	Maximum speed (rpm)	3000
	Displacement	1.123
	Number of cylinders	3
	cooling method	water cooling
	Engine oil replacement amount (L)	4.2
fuel form	diesel fuel	
Theoretical fuel consumption (L/h)	1.3-1.5	

Hydraulic system			
Main pump type/model	Gear pump	Multi-way valve brand	Taifeng Hydraulics
Main pump brand	Parker	Rated set pressure (Mpa)	18MPa
Main pump maximum flow (L/min)	36.8	Maximum set pressure (Mpa)	20MPa
Multi-way valve	8-way hydraulic control valve	Travel hydraulic motor type	BWV-800WCD

- Please read the instruction manual carefully and use it correctly.
  - Be sure to fasten your seat belt during operation. ※Except for soft top specification
  - When driving construction machinery with a body weight of less than 3t, please receive "special education on driving construction machinery for vehicles" in advance, and be sure to participate in "skills training for driving construction machinery for vehicles" if it is more than 3t.
- R330 According to the conditions of the Occupational Safety and Health Act, the body mass may reach 1952kg
- In order to prevent breakdowns and accidents, be sure to check the machine regularly.



# MINI EXCAVATOR R330



CLEAN EXHAUST GAS IS DISCHARGED,  
ENERGY-SAVING AND EFFICIENT.

**EXCELLENT PERFORMANCE,  
FULLY MEET THE NEEDS OF  
ALL TYPES OF USERS.**



Complies with Stage 5 of European vehicle emission standards

Comply with U.S. EPA environmental standards



# R330 SMALL EXCAVATOR

The machine is equipped with an environmentally friendly engine. It meets Euro V and EPA emission standards, is fuel-efficient, low-noise, and can achieve high power output. Durability, safety and comfort are comprehensively upgraded. Pilot operation on both sides, large arm side swing, shock-proof seat, equipped with hot and cold air conditioning, convenient and fast operation performance improves work efficiency.

## THREE UPGRADES



### Wiper

When it rains, you can control the sight of the front window to prevent danger during operation.



### Bulldozing plate

The double-layer widened and thickened bulldozer has a longer service life.



### One forging oil cylinder

The one-piece forged cylinder rod is used, which will not break and has higher precision.



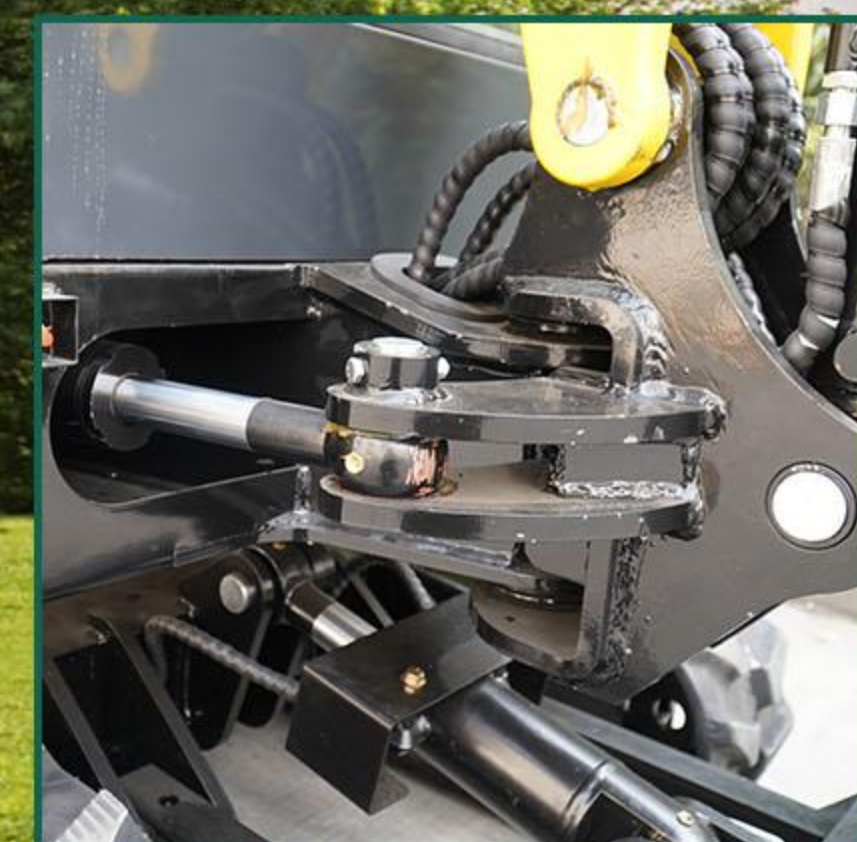
### Two side pilot operation

It uses a pilot handle with a load-sensitive multiplex valve, and the pilot handle is smoother, and you feel the contrast more clearly when you are driving.



### Improved plowing performance

Increase the bottom height of the bucket, reduces the risk of contact with the loading platform.



### Deflectable boom

Deflectable boom, multi-degree-of-freedom operation, large deflection angle, more flexible operation, and can meet more operating requirements.



### Oil cylinder protection

Cylinder cover can protect the cylinder during operation and avoid damage to the cylinder.



# R330 MINI EXCAVATOR

A high-dimensional intelligent fusion that is safe, comfortable, and easy to operate.

# USING A LOAD SENSING SYSTEM

Pursuing High Performance for All Basic Performances, The system continuously controls the pump discharge flow rate by feeding back the "pump discharge pressure" and "actuator load pressure" to the LS regulator installed in the hydraulic pump, and only provides the required flow rate to the control valve.

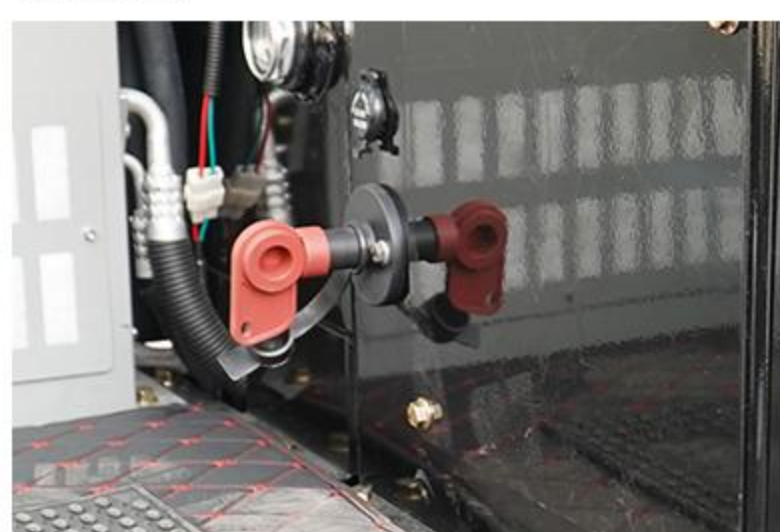
## Digital display instrument

The integrated digital instrument panel on the console has a large screen, simple display, and is easy to read. Moreover, due to its position on the side of the seat, it can be used to check various items with minimal visual movement during operation. Necessary information can be displayed through simple operations, and function buttons are located below the LCD to improve operability.



## Power switch







The main switch of the power supply can be turned off with just one click, which can prevent power loss and fully protect the equipment during long-term shutdown



## Knob throttle

The rotary throttle has high precision strong operation and more beautiful appearance



- 1  **Battery level**
- 2  **Oil quantity**
- 3  **Water temperature**
- 4  **Lamp indicator light**
- 5  **Hydraulic oil alarm**
- 6  **Oil pressure alarm**

## Safety pilot lock

Safely operate the pilot lock handle to prevent misoperation and be safer.



## Working equipment

The cast boom bracket is adopted, with a smooth and thick structure, one-piece molding, beautiful appearance and durability. The large arm is arranged with high-pressure iron pipes, which has a neat and beautiful appearance, effectively reduces the wear of the oil pipes, has a long service life, and is easy to replace some oil pipes for easy maintenance.



## Semi-enclosed seat

Semi-enclosed shock-proof seat, ergonomically designed, adjustable, highly comfortable, as comfortable as a passenger car



## Armrest box

Adopting a plastic armrest box, the appearance is more beautiful. The left armrest box adopts an upward flipping design, which is convenient for getting on and off during work. At the same time, the lever is a pilot lock switch, which protects the oil circuit and prevents accidents caused by accidentally touching the pilot handle when getting on and off. The upper side of the armrest box is equipped with a hand rest, which can work for a long time and reduce fatigue



## Comfortable cab

The design concept of "driver centered" greatly reduces the noise and vibration inside the cab; Simultaneously equipped with an air conditioning system, it meets the needs of seasonal operations and improves the comfort and convenience of operations



# Durable and easy to maintain



LED lighting



Warning lights



oil filler



engine



air filter



Built in walking motor



Thickened bulldozer shovel



One forging forming oil cylinder



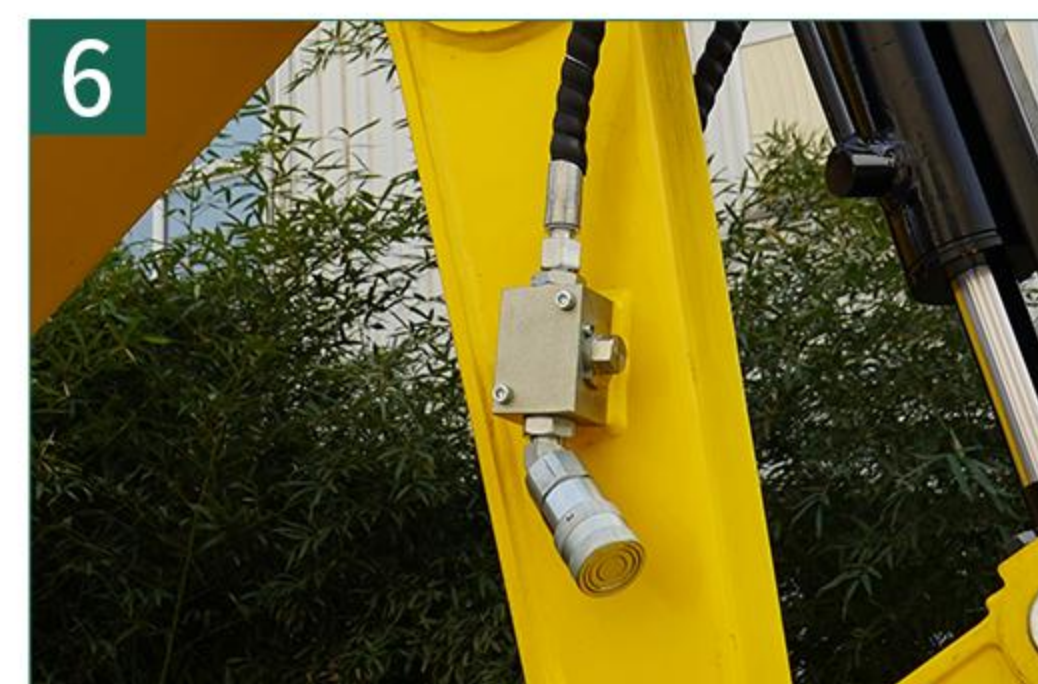
Thickened large excavation bucket



Oil cylinder protection cover



Galvanized quenched pin shaft



Crushing hammer shut-off valve

