

Real shot display



Basic parameters			
Overall length(mm)	6800	Bucket capacity (m ³)	0.7
Overall width (mm)	1900	Dig bucket capacity(m ³)	0.1
Overall height (mm)	2960	Max. dumping height(mm)	2800
Rated load (Kgs)	1500	Max. digging depth(mm)	2000
Operate weight (Kgs)	3800	Dumping distance(mm)	1050

Engine			
Model	YUNNEI engine	Optional model	XINCHAI/YANMAR engine
Rated power	37KW	Storage Battery	80 A free-maintenance
Pattemn.	In-line, water-cooling, 4 cylinder, direct inject		

Steering System			
Steering angle	±35°	Service brake	Drum brake(Expanding shoe brakes)
Min. Turning Radius	4500mm	Parking brake	Hand operate,disc brake
Pattem	Articulatedtype ful-hydraulic power steering	Tyre Model	20.5-16

Payment term: 100% paid by T/T---30% paid as down payment when contract signed; the balance of 70% to be paid before shipment

Package: 3 unit/40HQ

Warranty: 12 months after B/L date or 1500 working hours (whichever come first)

Validity of Quotation: One months

Price: RMB 73000



BACKHOE LOADER

R910E



**EXCELLENT PERFORMANCE FULLY
MEET THE NEEDS OF VARIOUS USERS.**



EXCELLENT BASIC PERFORMANCE

FRONT AND BACK WINGSPAN

It is widely used in earthwork construction machinery for highways, railways, construction, hydropower, ports, mines and other construction projects. It is mainly used for shoveling bulk materials such as soil, sand, gravel, lime, coal, etc. It can also be used for light shoveling operations on ore, hard soil, etc.



FRONT AND BACK WINGSPAN

Equipped with strong arms at the front and rear and drive.experience.experience.

CAB DISPLAY



The spacious and bright cab maintains a comfortable driving



Comfortable safety seat equipped with shock absorption function to provide a more comfortable use



The steering wheel and operation panel are fully functional and easy to understand, making it easy to operate



RELIABLE WORKING PERFORMANCE



Durable tires



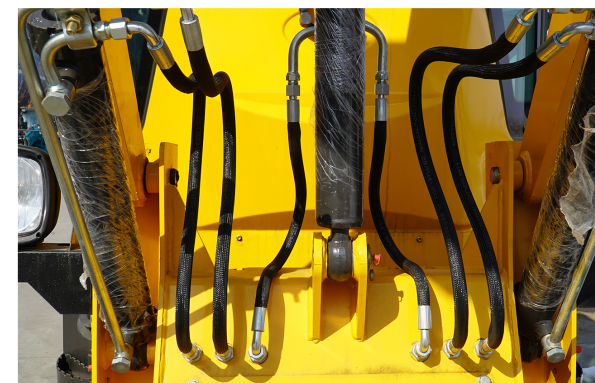
Steering wheel



A sturdy large arm



Comfortable cab



Tubing



**EXCELLENT OPERABILITY
AND COMFORT**

PRODUCT HIGHLIGHTS

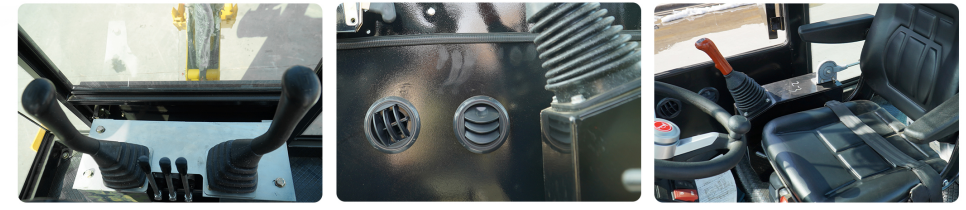
Product uses and features

It is widely used in earthwork construction machinery for highways, railways, construction, hydropower, ports, mines and other construction projects. It is mainly used for shoveling bulk materials such as soil, sand, gravel, lime, coal, etc. It can also be used for light shoveling operations on ore, hard soil, etc.

External Display



Show Details



The vehicle is equipped with heating and cooling air conditioning, a comfortable cab, and spacious seats to ensure the operator's experience. At the same time, the convenient operating system and solid and durable hardware configuration ensure that it can adapt to a variety of terrains and environments during use.

