



RIPPA

R915T

Standard bucket capacity: 0.65m³ | Rated power: 41kw/55kw |
Operating weight: 4200kg



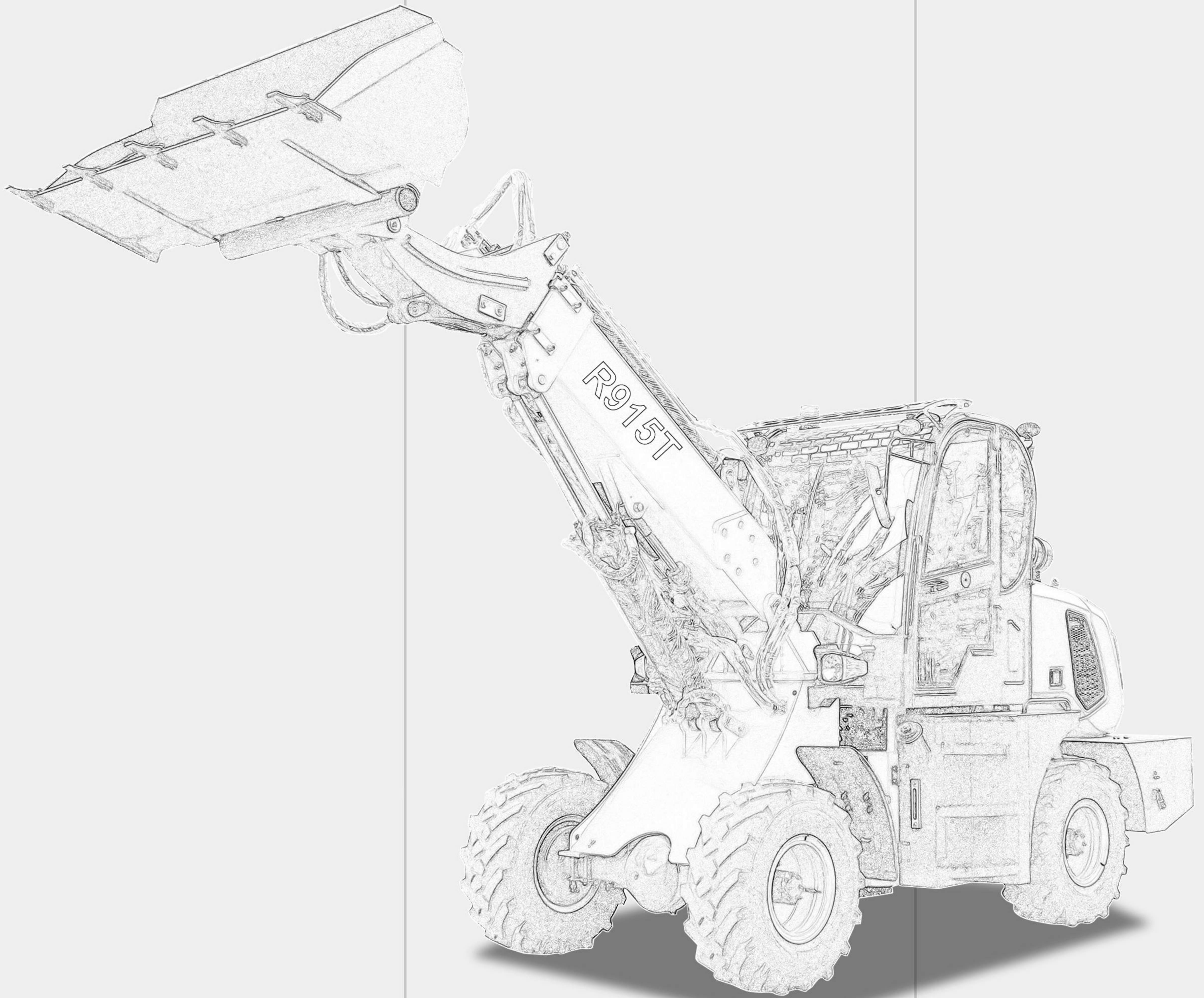
RIPPA

Keep evolving for the better

Rippa Machinery Group Co., Ltd. was established in 2006 and has passed the EU CEISO9001 certification. It has been awarded the title of "Contract abiding and Reputable" in Shandong Province. The company has a domestic sales department and an international business unit, and the enterprise is developing towards diversification, multi industry, and collectivization

We are Rippa

Rippa is a brand renewal and upgrade, reflecting our core concept of sustainable development and leaving a positive development footprint. Looking ahead, we will continue to provide innovative products and solutions to drive continuous progress in our world today.



NEW POWER

Paired with Kohler KDI1903TCR/Changchai 4G33 (Euro 5) engine is available for you to choose from, providing more power support for driving. Soft roar, elegant start, strong and stable output power, have been proven by the market



REDUCE FUEL CONSUMPTION



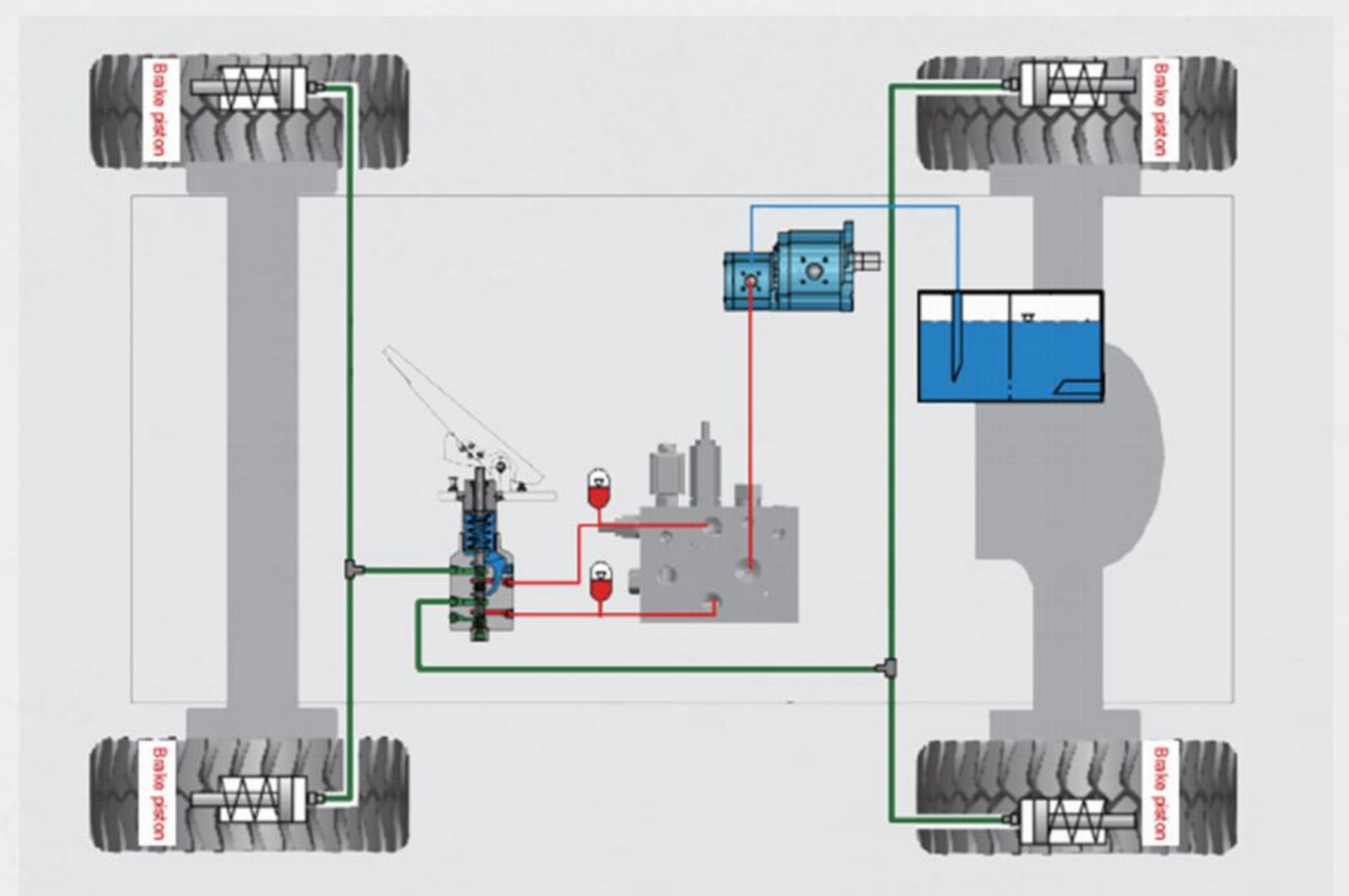
The above data are all obtained under ideal testing conditions, and there may be some deviations from the actual testing data for reference only.

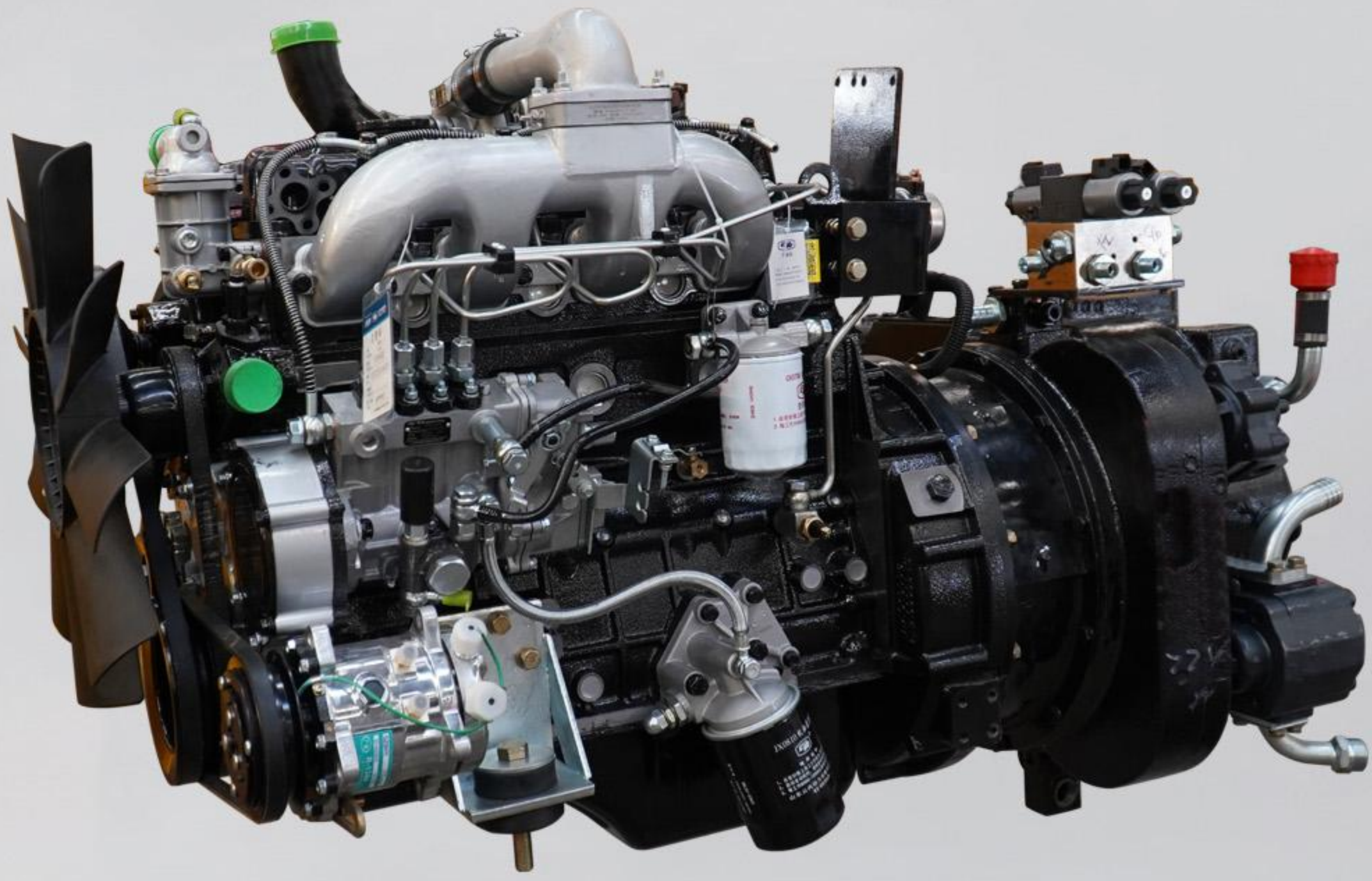
Precise combustion control

An electronically controlled high-pressure common rail fuel system is used to achieve precise combustion control. Intelligently adjust the power curve to meet multiple working modes to achieve high efficiency and fuel saving. The engine cylinder adopts a new reinforced design with a 30% increase in hardness. It has great advantages under low-speed and high-torque working conditions, and also has stable and strong power performance under high-intensity and long-term working conditions.

Fully hydraulic braking system

It adopts full hydraulic braking, independent control of front and rear dual circuits, and dual insurance, which is safer, more reliable and more sensitive.





ENGINE

Manufacturer Equipped with Kohler /Changchai
Power 41kW/55kw

- Economically fuel-efficient, with enhanced power

- Changchai Euro 5 can meet emission requirements without adding urea;
- The power is optimized and matched, with high fuel efficiency, large low-speed torque, strong power and high operating efficiency.
- An electronically controlled high-pressure common rail fuel system is used to achieve precise combustion control. Intelligently adjust the power curve to meet multiple working modes to achieve high efficiency and fuel saving

- Efficient production capacity and increased profits

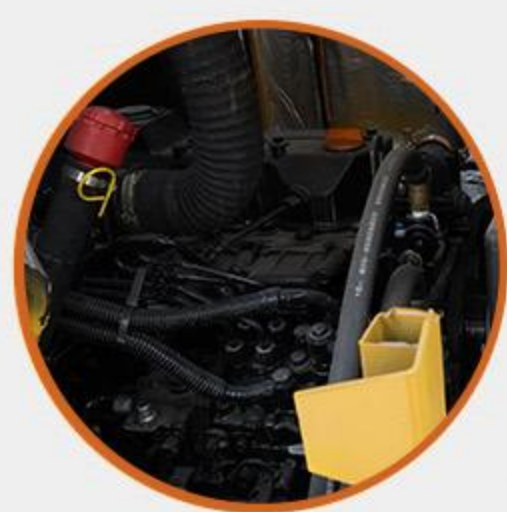
- The high-efficiency engine combined with the large-capacity bucket and mine-type reinforced chassis comprehensively improves production capacity.
- The telescopic boom which can reach 4.2m greatly increase it's working scope.
- It adopts a fixed-axis gearbox, an industry classic transmission, with direct and efficient transmission, stable quality and high reliability.

- High quality and durable

- The seals, valve & joystick handle are famous products which guarantee that it's a reliable long lasting machine.
- Over-heavy load accelerated reliability test verification to meet the needs of various harsh working conditions.

- Comfortable cab

The overall cab is fully sealed, the transmission system is optimized, shock absorption and noise reduction make driving safe and comfortable; Luxurious seats, added interior. Equipped with internal ceiling lights, fans, and water cup holders, allowing users to Convenient and considerate to use, optional air conditioning makes the driving environment more comfortable



POWER SYSTEM

There are Kohler KDI1903TCR/Changchai 4G33 (Euro 5) engines for you to choose from, with optimized power matching, high fuel efficiency, high low-speed torque, strong power, and high work efficiency.



COMFORTABLE CAB

Wide view cabin and two entrance makes the operating convenient and safe. Adjustable seat and optional air conditioner makes the operating more comfortable.



ENHANCE TELESCOPIC BOOM

The telescopic boom which can reach 4.2m optimizes the structural design and eliminates partial weak. Over-heavy load accelerated reliability test verification to meet the needs of various harsh working conditions. greatly increase it's working scope.



LINKS AND DRIVES

The lightweight articulated structure and shaft transmission design of the frame, the articulated centering arrangement, strong power, small steering angle and turning radius, better passing ability, and flexible operation



Ergonomic shock-absorbing seat



Multifunctional electronic instruments

- a.** Fuel consumption management: It can confirm the amount of oil and changes in hydraulic oil in the dashboard, and can also initialize the usage time and change the maintenance product replacement cycle
- b.** Machine pressure: The operating pressure of the machine can be observed on the dashboard at all times
- c.** Warning message confirmation: Equipment warning messages can be confirmed on the dashboard.
- d.** Reverse image: When reversing, you can observe the situation behind the car, which enhances driving safety.

COMFORTABLE AND SAFE DRIVING ENVIRONMENT

REASONABLE OPERATING CONFIGURATION

a. KEY START

- One key start, strong operability, safe and reliable.

b. Car radio

- During boring work, you can listen to programs or play music to soothe your mood and make your work more comfortable.

c. auxiliary button

- The centralized design of auxiliary buttons greatly improves the convenience of equipment operation.

d. Car air conditioner

- The air conditioner is under the seat, which improves the comfort of blowing air.



COMPREHENSIVE UPGRADE OF DRIVING QUALITY IMPROVED RIDE AND TACTILITY

Comfort seat pilot operation

a. shock absorbing seat

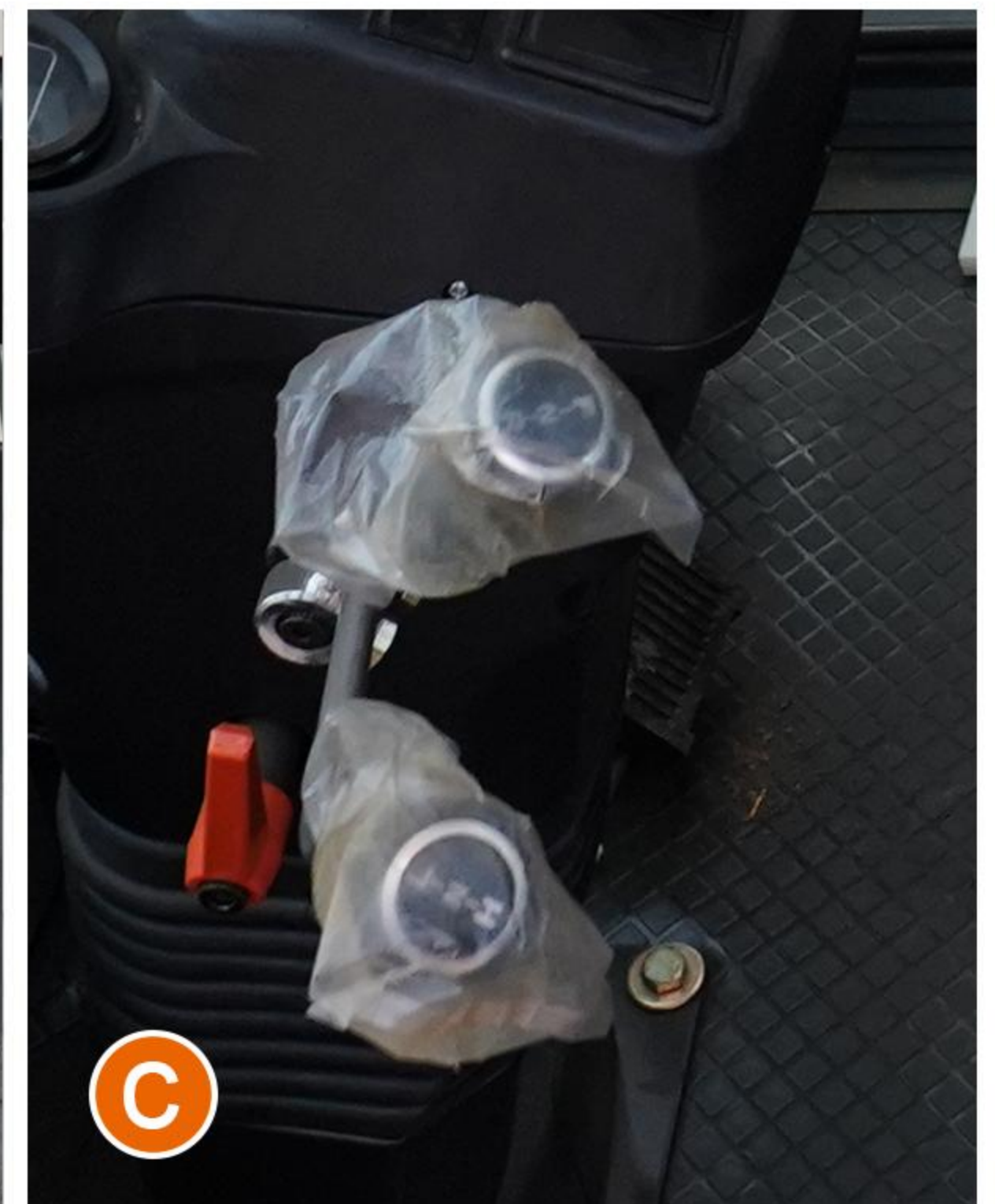
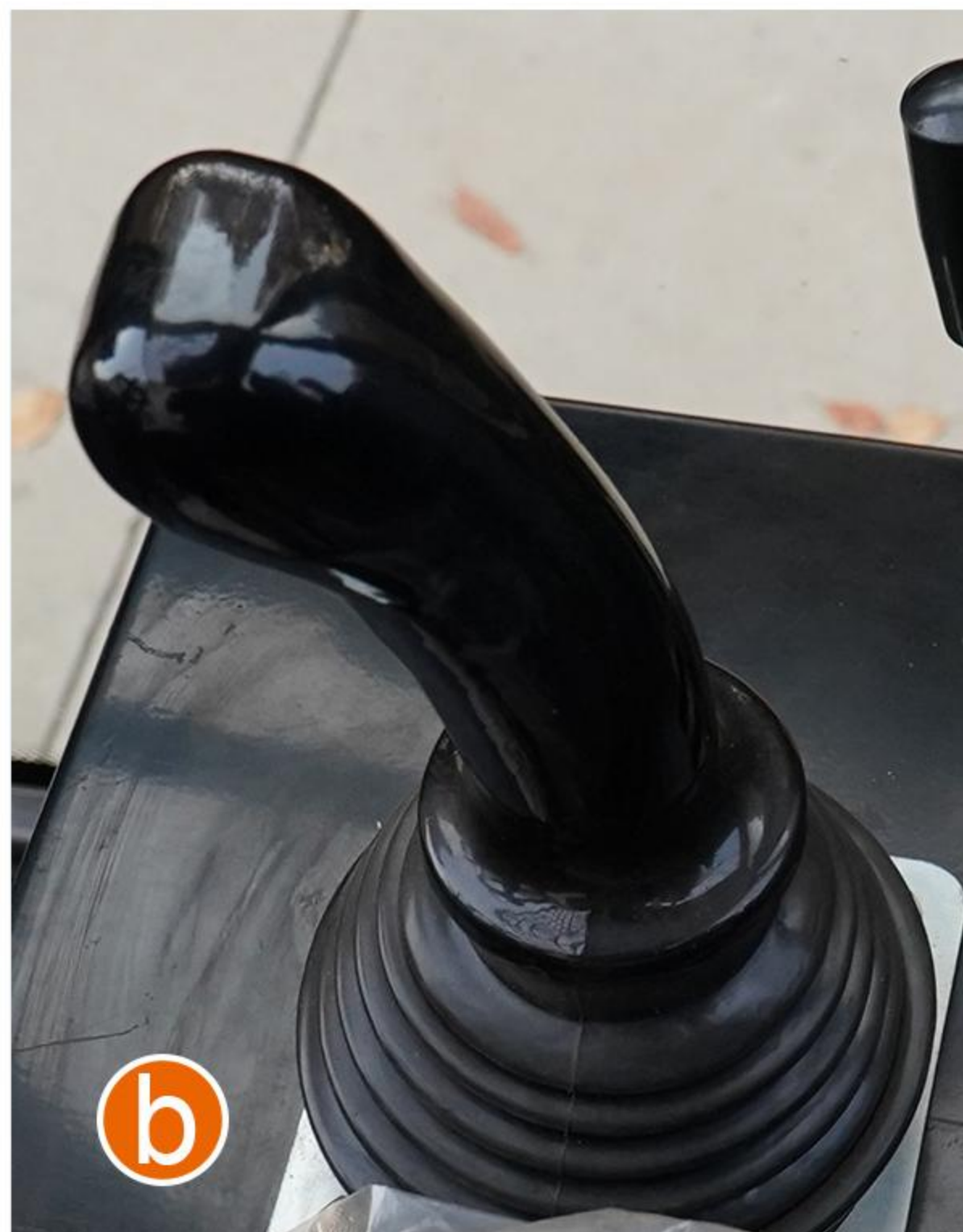
Optimization and improvement of cab shock absorption effect to reduce fatigue caused by operation

b. Operating handle

Rounded handle, comfortable to hold, strong operability and more precise operation control

c. Fast and slow gears

Appropriate gears can be used according to different working environments



CONVENIENT, FAST AND ECONOMICAL MAINTENANCE

New and convenient maintenance settings provide customers with convenient and fast usage conditions.



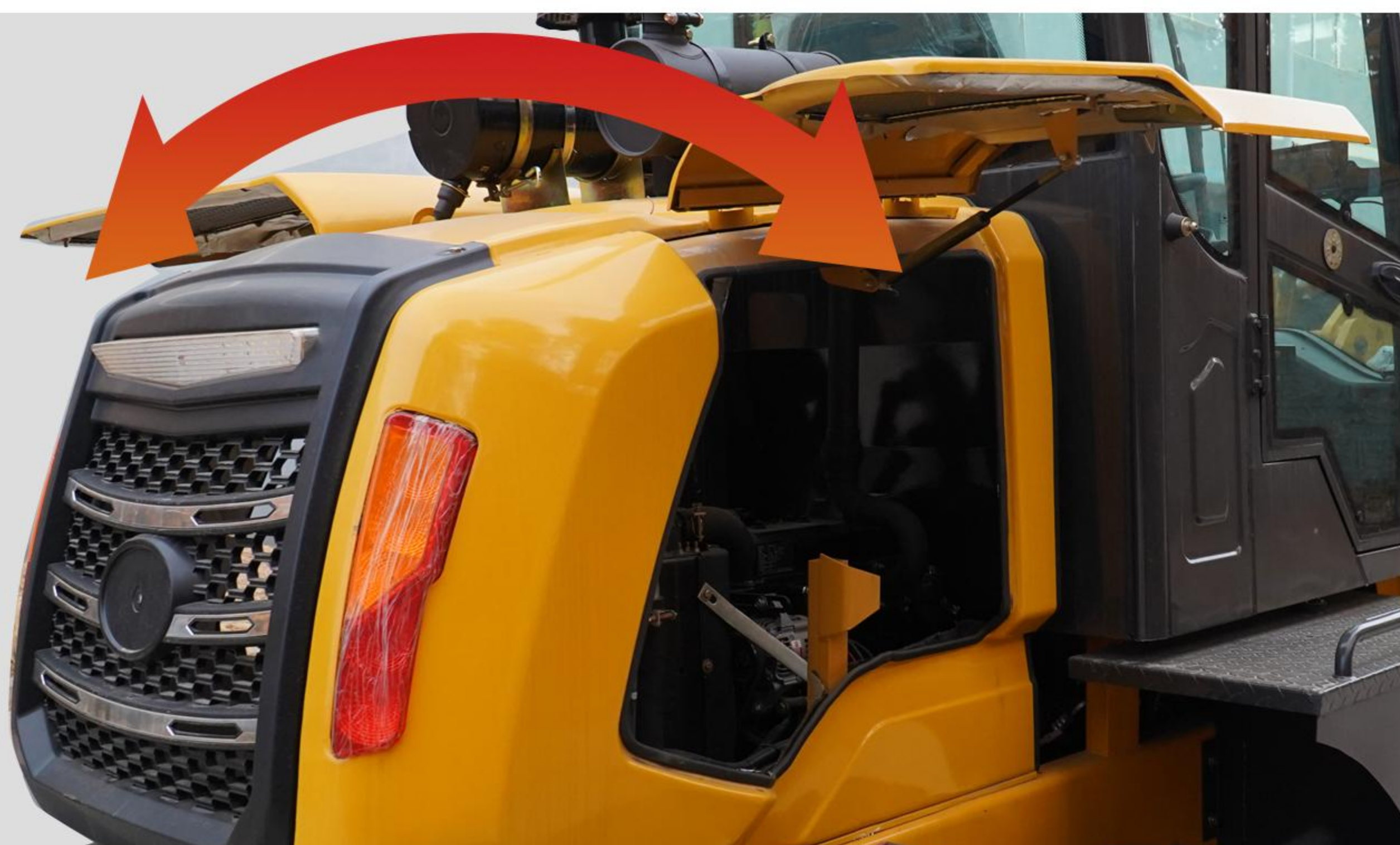
The rear cover can be opened as a whole part just by your hands, which makes the maintenance much more simple.



RELIABLE AND CONVENIENT MAINTENANCE SYSTEM

The engine cover adopts humanized design

Continuing the design of maintenance convenience, repairs or inspections can be easily completed.



1.Extra large bucket

The super strong bucket is machine welded, strong and durable, and can be used for transportation operations in various complex terrains and environments, and can meet the needs of long-term and high-intensity operations.

2.Heavy duty axle

Both the front and rear drive axles have reinforced structures, adopt full hydraulic braking, and are equipped with split clamps. Easy to maintain. The rear axle is an integral swing frame, which has a more reliable structure and is more suitable for heavy-load working conditions. It greatly improves product reliability and has a long service life.

3.Oil cylinder

The reinforced design and integrated design effectively reduce the welding seams, making the structure more compact and the whole more coordinated. It not only significantly improves the durability of the cylinder, but also enables it to maintain stable performance in various complex environments.

4.Strengthen the frame

The large-span frame strengthens the structure, focusing on strengthening the installation position of the steering cylinder. The frame has better reliability and can adapt to a wider range of working conditions.

5.Off-road tires

Tough and durable, extremely wear-resistant! Whether it is muddy wetlands or rugged mountain roads, it can easily handle it and provide you with a stable and safe driving experience.

MAIN SPECIFICATIONS

Model	R915T
Working weight	4200KG
Bucket capacity	0.65m ³
Bucket width	1700mm
Overall Length	5900mm
Overall Height	2710mm
Overall Width	1800mm
Max Lifting Height	4700mm
Max Bucket hinge pin height	4200mm
Max Unloading Height	3600mm
Service Brake	Four wheel disc brake
Parking Brake	Hand operated
Engine Model	Kohler /Changchai
Rated Power	41KW/55KW
Rated Speed	2400 r/p.min (rpm)
System pressure	16Mpa
Hydraulic output	70L/min



> VARIOUS ASSISTIVE DEVICES



Quick change



snowplow



Grab a wooden fork



Fork



Bulldozer



snow shovel



4-in-1 bucket



6-in-1 bucket

SERVICE UPGRADE AND CAREFUL GUARDING

Exclusive quality: RIPPA care



Personal service and worry-free maintenance



Perfect after-sales service

Perfect after-sales service system: 24-hour online customer service, solve quality problems at any time



Repair and maintenance

First class, fast maintenance with original assembly maintenance



Post-processing maintenance training

Help customers understand correct operation and maintenance methods to avoid misjudgments and failures caused by improper operation.



DPF cleaning

During the warranty period, free cleaning service will be provided when a post-processing failure occurs for the first time.



Nationwide sales and service network

RIPPA is always committed to providing customers with high-quality product after-sales service and support, and customized solutions can maximize customer needs.

RIPPA Jining
 Dealer/Direct Sales ● Service outlets



Multiple ways to report for repairs
 (Telephone, WeChat, online customer service)



Expert seat
 Troubleshooting



Call center dispatch system



Service engineer mobile app



Intelligent service data system

WE ARE RIPPA

Shandong Rippa Machinery Group Co., Ltd. is located in the Sixth Industrial Park, Jining high tech Zone, Shandong Province. It is a state-level high-tech enterprise with the right to import and export;

The company's staff are vigorous and enterprising, and constantly create the legend and glory of the school!

Powered by **Kohler** (EPA) / **Changchai** (Euro V)



Shandong Rippa Machinery Group Co., Ltd.

Add: No.6 Industrial Park, Chongwen Avenue 2166, Gaoxin District, Jining City, Shandong Province



<https://rippaexcavator.com>

Some specifications are based on engineering measurements and may deviate from actual conditions. Specifications are for comparison purposes only and are subject to change without notice. Specifications of individual Rippa equipment will vary based on normal variations in design, manufacturing, operating conditions and other factors. Some pictures of Rippa equipment are not limited to standard packages.