

# RIPPA<sup>®</sup>

GLOBAL RECRUITMENT DISTRIBUTORS

RIPPA **20** YEARS



# R925



RIPPA's advantages in power, efficiency, versatility and value are driven by our robust features. Our compact articulated design uses less horsepower to do most jobs-that means less surface impact and lower operating costs.

- ✔ Excellent weight to lift ratio
- ✔ increases productivity, saving time and manpower
- ✔ Minimal surface impact
- ✔ Articulated, compact design
- ✔ Low operating cost
- ✔ Easy to operate
- ✔ 360° operator visibility
- ✔ Hundreds of attachments

---

# ENERGY SAVING AND EFFICIENT



---

## High efficiency

Low fuel consumption and excellent productivity help you complete your tasks more economically.

---

## Highly efficient performance

Tailor-made to meet job site requirements, tasks range from material transport and loading to general construction and stockpiling.

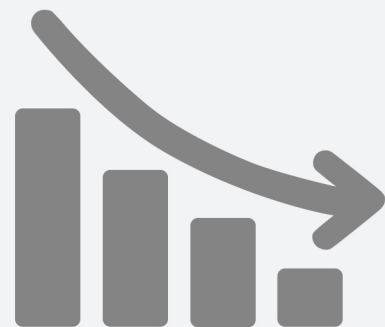
---

## Easy maintenance

Our electrical and hydraulic maintenance center has additional critical maintenance functions that enable quick, simple, and efficient machine maintenance and on-site component replacement.

## ECONOMICAL SAVINGS

**R925**  
IS YOUR WISE  
CHOICE



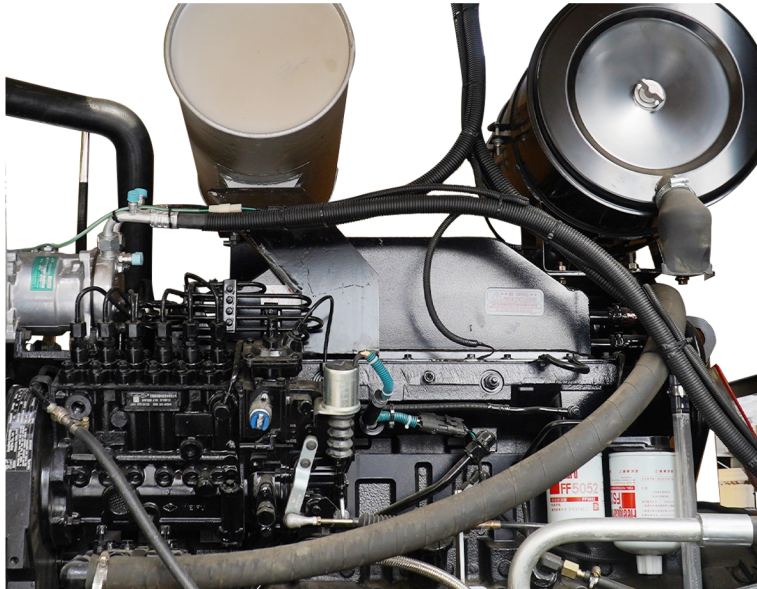
REDUCE

OWN  
FUEL

COST

# MAINSTREAM POWER IN THE INDUSTRY, GOOD ECONOMICS

The engine is equipped with a turbocharger, meets Euro V /EPA 4 standards, is powerful and efficient. Equipped with P, S, E multi-state switches, which can be reasonably selected according to the working conditions, which can reasonably improve efficiency and reduce fuel consumption.



H-shaped new appearance, beautiful and elegant; Compact and flexible, one machine can be used for multiple purposes, with quick return on investment to avoid equipment being idle.



# THE FRAME HAS STRONG LOAD-BEARING CAPACITY

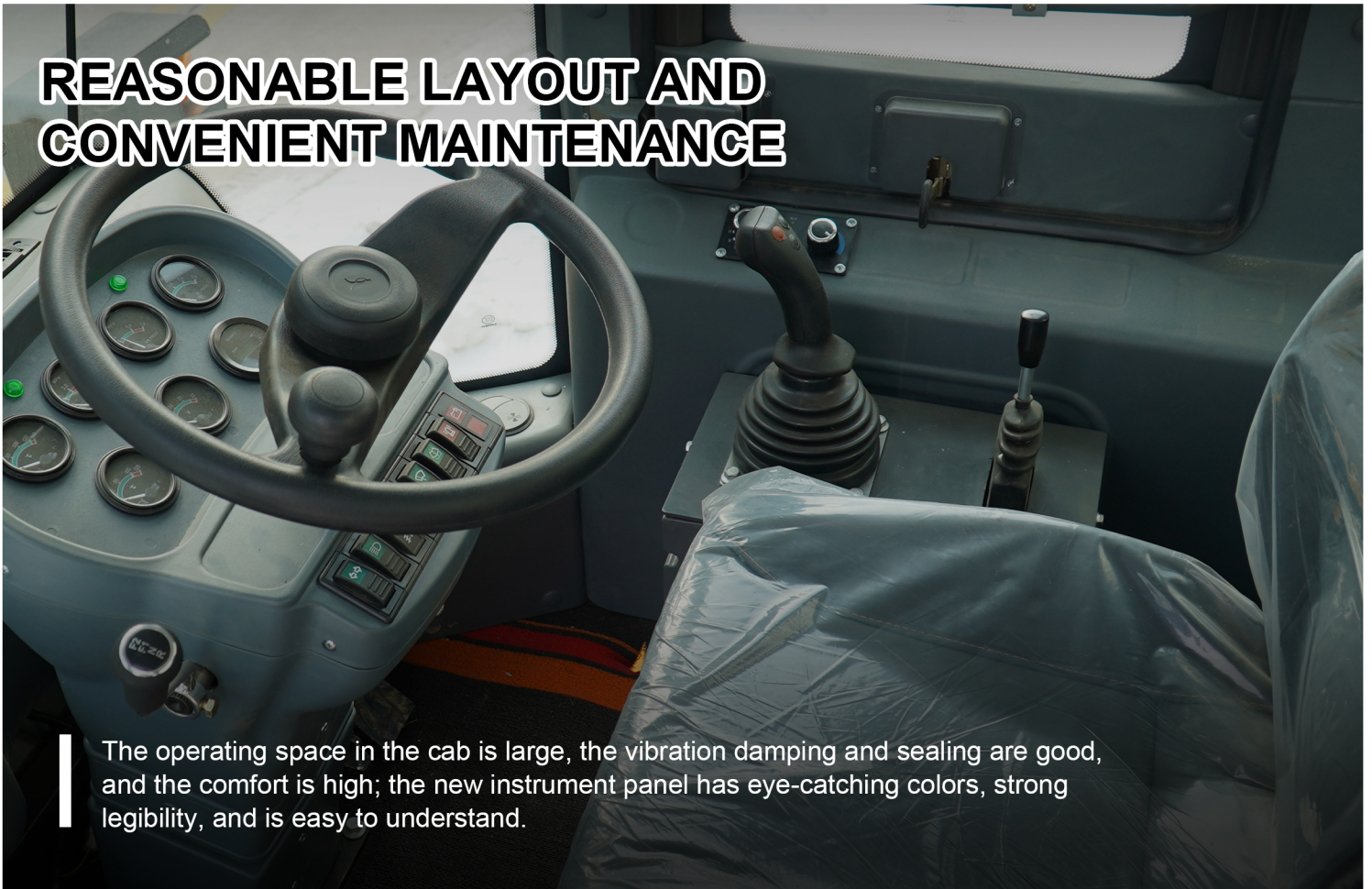
Tires are more solid and durable and can be used in earth and stone construction of highways, railways, buildings, hydropower, ports, mines and other construction projects.



Reinforced front and rear frames: The key stress-bearing parts are strengthened in design, with strong bearing capacity; stress concentration is eliminated, load distribution is reasonable, and the service life is long.



# REASONABLE LAYOUT AND CONVENIENT MAINTENANCE



The operating space in the cab is large, the vibration damping and sealing are good, and the comfort is high; the new instrument panel has eye-catching colors, strong legibility, and is easy to understand.



The horizontal radiator has small medium flow resistance and good heat dissipation effect.



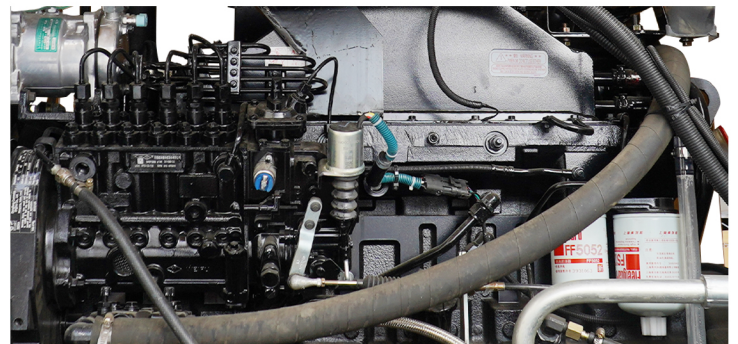
The hydraulic oil tank refueling port and torque converter oil filter are externally located for easy maintenance;



The comfortable and spacious cab is equipped with heating and cooling air conditioning and safety seats to ensure driving experience and safety.



The multi-functional display instrument can intuitively display various data of the machine, and the operator can monitor the health status of the machine through it.



The large-opening hood can be opened upward 90°, providing a large space for maintenance; the air filter and fuel filter are centrally arranged.

# VARIOUS ASSISTIVE DEVICES



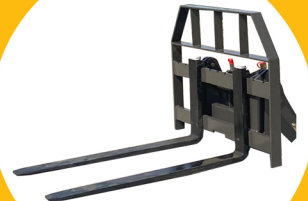
Quick change



snowplow



Grab a wooden fork



Fork



Bulldozer



snow shovel



4-in-1 bucket



6-in-1 bucket

# SPECIFICATION



Model	R925
Dimensions(L*W*H)	6400*2300*2950mm
Bucket Capacity	1.3m <sup>3</sup>
Rated load	2500kg
Operating Weight	6000kg
Max Dumping Height	3600mm
Engine Brand/Model	YUCHAI/YCD4J22T-115 (Euro 5)
Number of Cylinders	4
Rated Power	85KW
Transmission Model	Automatic
Drive Axle Model	Big Hub Reduction
Number of Gear	F4/R4
Max. Speed	38km/h
Drive mode	4WD
Brake	Air Brake
Tyre Size	16/70-24
1*40HC Packing Quantity	2Units

# **WE ARE RIPPA**

Shandong Rippa Machinery Group Co., Ltd. is located in the Sixth Industrial Park, Jining high tech Zone, Shandong Province. It is a state-level high-tech enterprise with the right to import and export;

The company's staff are vigorous and enterprising, and constantly create the legend and glory of the school!

Powered by **Yunnei Kohler Changchai**



**Shandong Rippa Machinery Group Co., Ltd.**

Add: No.6 Industrial Park, Chongwen Avenue 2166, Gaoxin District, Jining City, Shandong Province



<https://rippaexcavator.com>

Some specifications are based on engineering measurements and may deviate from actual conditions. Specifications are for comparison purposes only and are subject to change without notice. Specifications of individual RIPPA equipment will vary based on normal variations in design, manufacturing, operating conditions and other factors. Some pictures of RIPPA equipment are not limited to standard packages.